

# MODULAR SYSTEM

**butech®**  
PORCELANOSA Grupo

**butech®**  
PORCELANOSA Grupo

The contents of this catalog are protected by Intellectual Property Law, Royal Decree 1 / 1996. Any reproduction of it, in whole or in part, without the consent of Porelanosa Grupo is liable under the Penal Code.



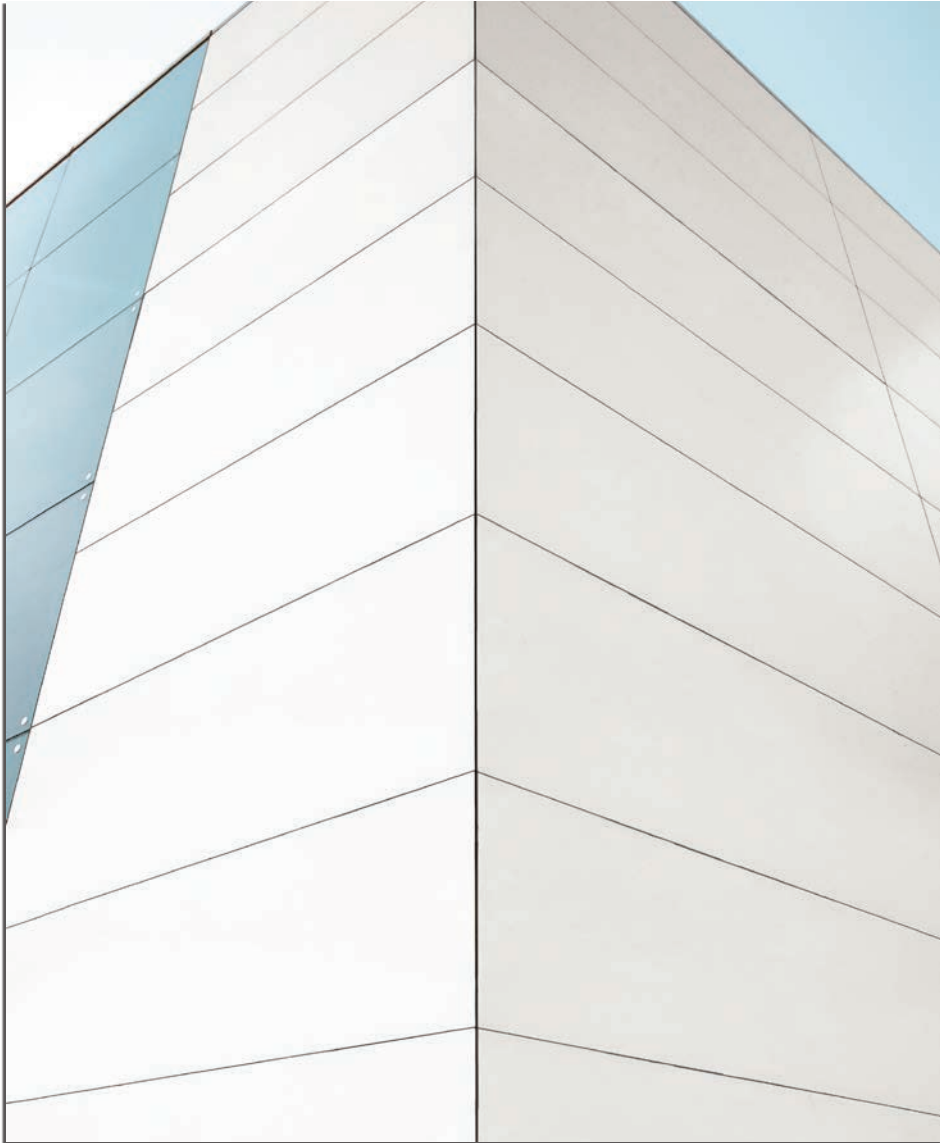
## SUMMARY

---

1. Butech modular system
2. Composition
3. Advantages
4. Certificates
5. Technical features
6. Technical details
7. Finishes

## BUTECH MODULAR SYSTEM

Butech's modular system is an innovative lightweight façade construction system, which by the quickness of its installation, and its contribution to the building's energy efficiency, make it a system that adds value to the finished product, for a price lower than traditional construction.



## COMPOSITION

The system is made up of two outer SECUROCK PANEL panels and an inner core consisting of three 4 cm thick insulation layers, thus achieving the highest energy efficiency performance for your building.

It is supported by a tubular steel structure that anchors the panel to the building structure.

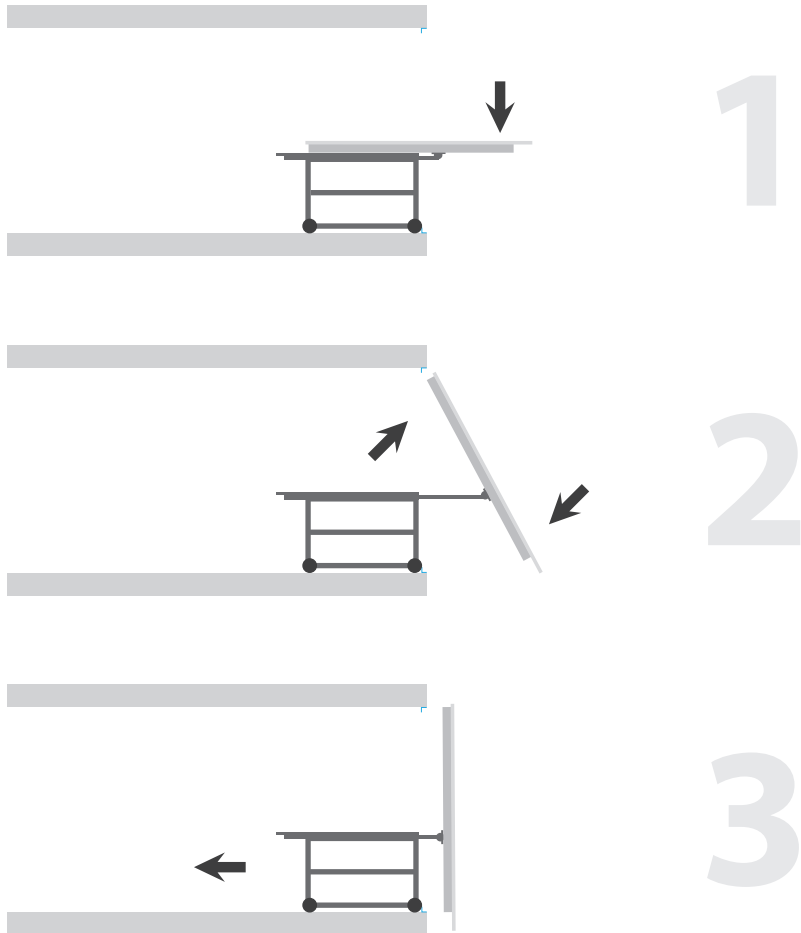


## ADVANTAGES OF THE SYSTEM

### Quick installation.

Thanks to its lightness and assembly simplicity, the modular system achieves a full finished facade installation speed that adapts to the needs of any project.

The modular system provides a reduction in construction times that is superior to any traditional constructive system, achieving productions of 3 m<sup>2</sup>/man hr, per installation equipment.



### Auxiliary means are not needed and waste is not produced.

Using a crane or scaffolding is not required as it is assembled from the inside of the building.

Being a prefabricated product tailored to your work, it does not need to be machined.







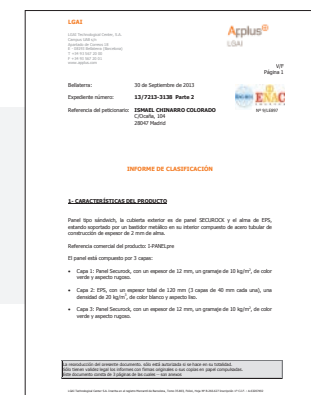
Butech's modular system is made up mostly by insulating material, thus achieving the highest energy efficiency performance for your building.



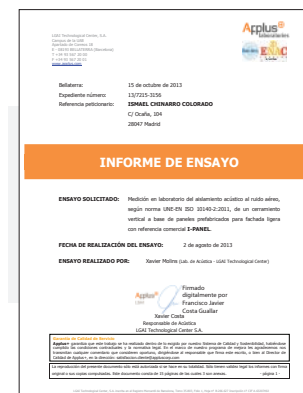
The system components are entirely recyclable, guiding your construction towards sustainable construction.



Butech's modular system has been certified by the Applus laboratory, having obtained the highest qualifications provided for in the CTE for curtain walls.



**Flammability.**



## Acoustic insulation against air noise.

## TECHNICAL FEATURES

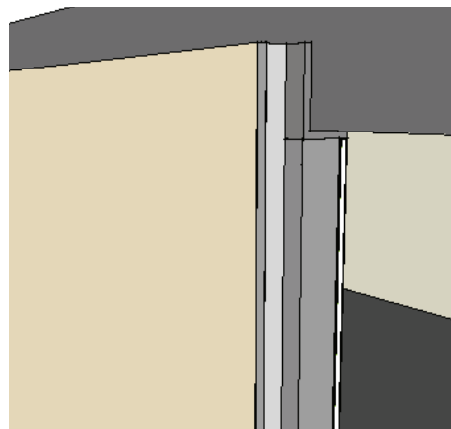
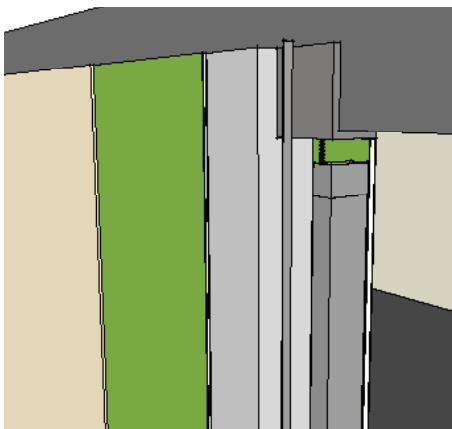
Air permeability	A - 4
Water permeability	R - 7
Resistance to wind load	200 km/h
Flammability	B - s1 - d0
Air noise insulation	Rw 36,0 dB
	RA 34,7 dB
	RAtr 30,9 dB
Thermal insulation	Rt 4,428 m <sup>2</sup> .k/W
	U 0,226 W/m <sup>2</sup> .k



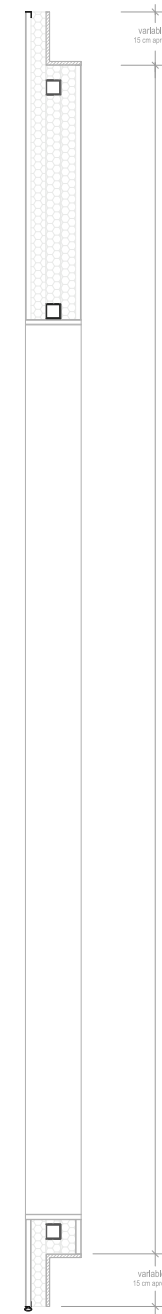


## TECHNICAL DETAILS

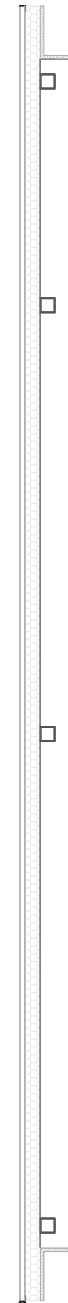
### Build-up view



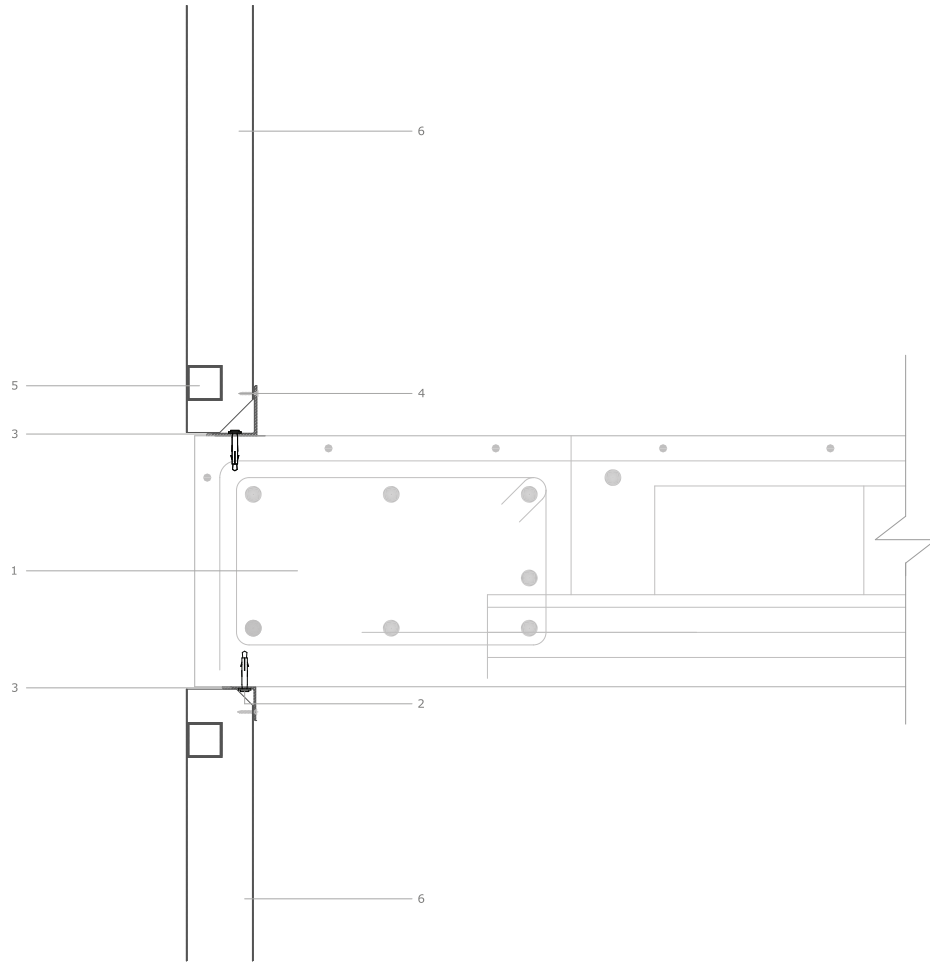
### Gap vertical cross-section



### Panel vertical cross-section

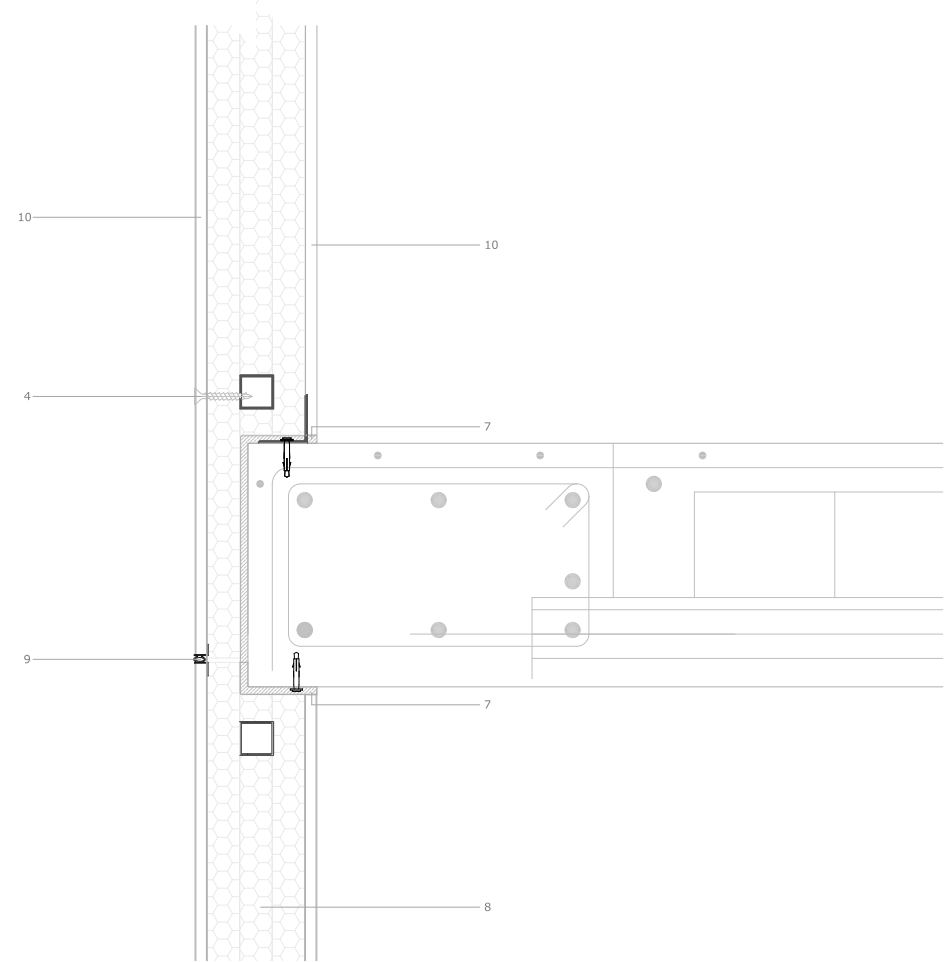


## Structure vertical cross-section



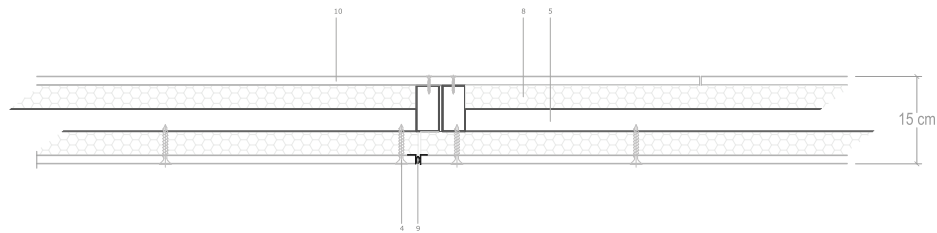
- |                                 |                       |
|---------------------------------|-----------------------|
| 1. Slab                         | 4. Self-tapping screw |
| 2. Mechanical anchoring to slab | 5. 40.40.2 Steel tube |
| 3. 60.60.2 Plate angle          | 6. 80.40.2 Steel tube |

## Panel vertical cross-section



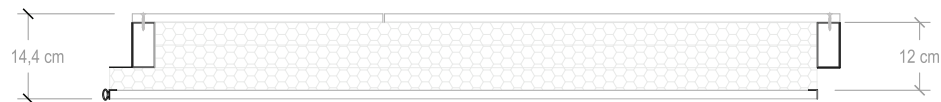
- |                                 |                             |
|---------------------------------|-----------------------------|
| 1. Slab                         | 6. 80.40.2 Steel tube       |
| 2. Mechanical anchoring to slab | 7. Adjustment to slab foam  |
| 3. 60.60.2 Plate angle          | 8. Expanded polystyrene EPS |
| 4. Self-tapping screw           | 9. EPDM joint               |
| 5. 40.40.2 Steel tube           | 10. Securock panel          |

## Horizontal cross-section. Joint between panels

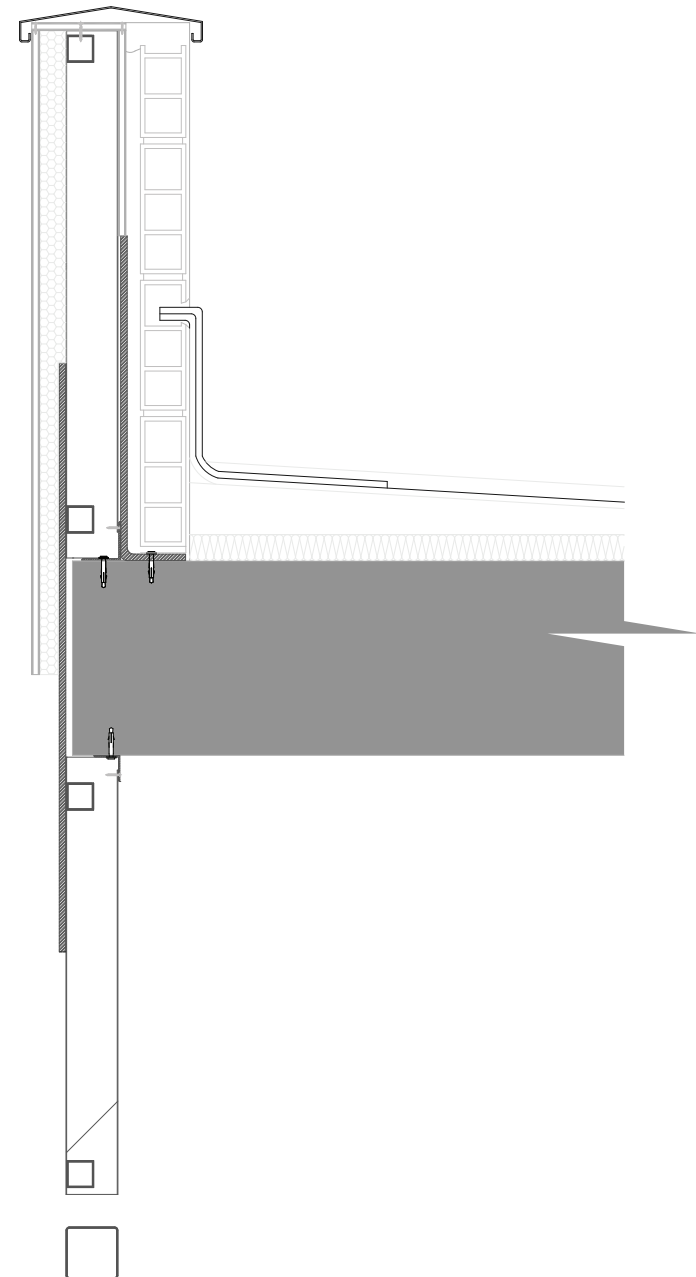


- |                                 |                             |
|---------------------------------|-----------------------------|
| 1. Slab                         | 6. 80.40.2 Steel tube       |
| 2. Mechanical anchoring to slab | 7. Adjustment to slab foam  |
| 3. 60.60.2 Plate angle          | 8. Expanded polystyrene EPS |
| 4. Self-tapping screw           | 9. EPDM joint               |
| 5. 40.40.2 Steel tube           | 10. Securock panel          |

## Horizontal cross-section. Panel



## Crowning trim



## FINISHES

### XLIGHT

XLight is a new type of extremely thin, large format porcelain tile, which is achieved thanks to the use of the latest technological advances in ceramic production.

It is available in two 3 mm thick formats, 300 x 100 cm and 100 x 100 cm, back-reinforced with a fiberglass mesh that enhances the slab's flexural strength.

The large size of this type of porcelain tile, its zero water absorption, its resistance to atmospheric agents, its lightness with less than 10.5 kg/m<sup>2</sup> as well as its design, make the XLIGHT slabs an excellent solution for all types of facades.



## KRION®

KRION® is a product that is solid, compact, pore-free, with uniform properties throughout its section, and which can be transformed to obtain figures and complex volumes. The KRION® surfaces employed by butech have high resistance to temperatures and chemical agents, are easy to clean and maintain, and offer warmth and beauty, making these solid surfaces ideal for the most demanding applications.

Unlike other materials used professionally, it can be injected, cut, machined, and glued, achieving invisible joints. This property allows designs to freely incorporate functionality and ergonomics criteria which would be otherwise difficult to obtain.

### Advantages

- Anti-graffiti.
- Fire-resistant.
- Resistant to cigarette burns.
- Eco-friendly.
- Antibacterial (no additives).
- Great durability.
- Resistant to high temperature.
- High degree of hardness and mechanical strength.
- Moldable.
- Large surfaces without joints.









**butech building technology, s.a.**

Ctra. Vila-real - Puebla de Arenoso (CV-20), Km. 2.5 · Apartado de Correos 297 · 12540 Villarreal, Castellón - Spain.  
Teléfono (+34) 964 53 62 00 · Fax: (+34) 964 53 00 34 · E-mail: [butech@butech.es](mailto:butech@butech.es) · [www.butech.es](http://www.butech.es)



BY APPOINTMENT TO  
H.R.H. THE PRINCE OF WALES  
MANUFACTURER AND DISTRIBUTOR  
OF CERAMIC TILES AND BUILDING PRODUCTS.  
PORCELANOSA GROUP LIMITED