

KRION® ARQ

KRION®
PORCELANOSA SOLID SURFACE

TABLE OF CONTENTS

2	THE SOLID SURFACE FROM PORCELANOSA GROUP
4	THE NEW GENERATION SOLID SURFACE
6	A TREND-SETTING FORWARD-LOOKING MATERIAL
8	A VERSATILE DESIGN SOLUTION
10	PROPERTIES
12	LEND FREE REIN TO THE IMAGINATION
14	APPLICATIONS
16	HOMES
18	DESIGNS
20	TRANSPORT SECTOR
22	HOTELS
24	HEALTHCARE
26	COMMERCIAL AND BUSINESS PREMISES
28	RESTAURANT AND CATERING
30	PUBLIC SPACES AND GOVERNMENT BUILDINGS
32	THROUGHOUT THE WORLD
41	TECHNICAL FEATURES

KRION™

THE SOLID SURFACE FROM PORCELANOSA GROUP

KRION™ is a new generation solid surface developed by SYSTEMPOOL, a company that belongs to PORCELANOSA Group.

SHOWROOMS

With more than 400 showrooms spread worldwide; from Madrid to New York, through cities like London, Milan or Paris, Porcelanosa Grupo thus assures its presence in the five continents to show the steady improvement in innovation and design of all its products.

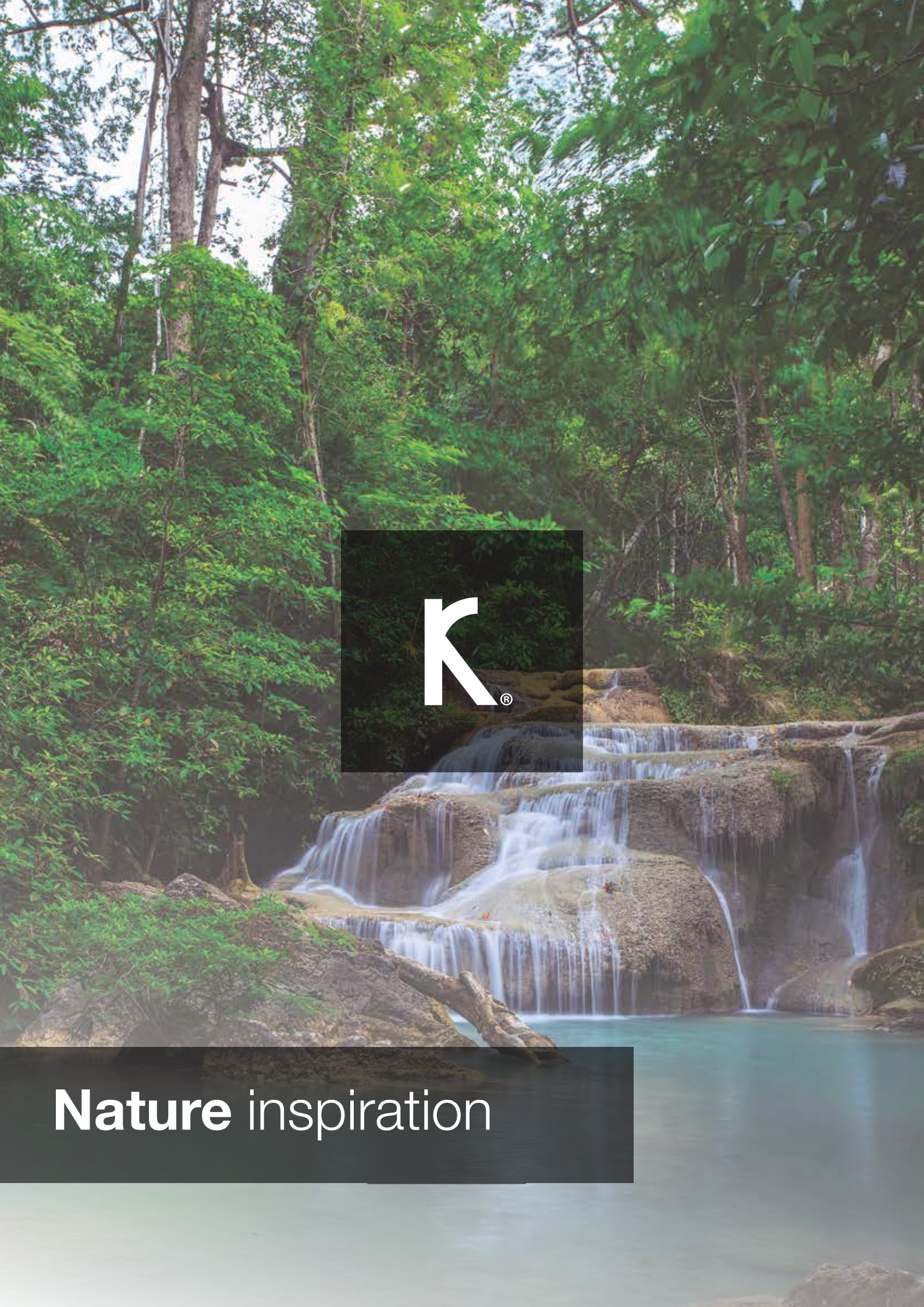
THE INFRASTRUCTURE

At Porcelanosa we base the success of our products on three premises; unconditional quality, a commercial network of our own and an infrastructure to embrace all these factors. We think the infrastructure is key to the success of our products. We want our installations to have a perfect combination of functionality, versatility and distinction.

PRESENT IN 144 DIFFERENT COUNTRIES
450 PORCELANOSA SHOWROOMS
A STAFF OF SOME 5,000 PEOPLE
85% OF OUR GOODS ARE EXPORTED ABROAD
MANUFACTURERS SINCE 1973







Nature inspiration

KRION™

THE NEW GENERATION SOLID SURFACE

KRION™ is a new generation solid surface developed by SYSTEMPOOL, a company that belongs to PORCELANOSA Group.

It is a material that is warm to the touch and similar to natural stone. It is made of two-thirds natural minerals (ATH – aluminium trihydride) and a low percentage of high-resistance resins. This composition gives KRION™ a number of exclusive features: it does not have any pores, it is anti-bacterial without any type of additive, it is hard-wearing, highly resistant and easy to repair, only requires minimum maintenance and is easy to clean.

It is shaped in a similar way to wood, making it possible to cut the sheets, connect them and thermoform them to create curved sections, and can even be injection moulded to create designs and projects that are impossible with other materials.

Seamless sections can be created, preventing liquids from being absorbed and making cleaning and maintenance easier.

We offer a wide range of colours, including a white finish that stands out for its purity and neutrality in comparison with other similar materials.

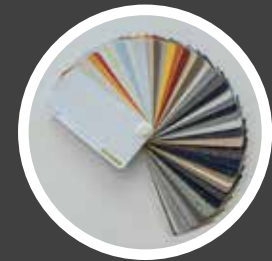
It is an ecological material, as it is 100% recyclable. All products made of KRION™ can be reprocessed and reused in the production cycle.



AN EXCLUSIVE FORMULA



NATURE INSPIRATION



A WIDE VARIETY OF COLOURS



KRION™ is a compact alumina material, made of alumina powder with a particle size of 7 microns upwards and high-tech monomers, and exclusive additives developed by our R&D department.

Alumina trihydrate (ATH) is extracted from mineral ore and refined, prior to its use, to ensure a purity of up to 99.8%.

[EXCLUSIVE FORMULA]

**99.8%
Pure ATH**





A TREND-SETTING FORWARD-LOOKING MATERIAL CONCEIVED TO IMPROVE YOUR QUALITY OF LIFE

1

KRION™: PERFECT FOR EVERYDAY USE

Conceived to offer a variety of different applications, KRION™ is the perfect solution for a wide range of settings: in kitchens as a countertop, as office furniture, or as an indoor wall covering in your favourite restaurant.



2

KRION™ - FOR YOU AND YOUR LOVED ONES

Although KRION™ can be used in a variety of different venues, it is ideal for homes. Properties like its low level of VOC emissions, easy-to-clean surface, food-grade anti-bacterial properties, and resistance to chemicals, it ensures a safe household environment, particularly for kids.





3

ECO-FRIENDLY

KRION™ is an environmentally-friendly material, made of two-thirds natural minerals. It does not release any volatile organic compounds and it can easily be repaired and restored to its original appearance.

4

A LONG-LASTING MATERIAL

Because it is mainly formulated with natural minerals and a low percentage of high-resistance resins, KRION™ boasts the following properties: it is hard, resistant, long lasting, easily repairable, easy to clean, low on maintenance, and has no pores.





A VERSATILE DESIGN SOLUTION IDEAL FOR DIFFERENT SECTORS

KRION™ is conceived for use in a wide variety of different applications. This makes it the perfect choice for a wide range of different settings.



HOMES

Apartments,
Villas,
Lofts
etc.



TRANSPORT SECTOR

Aeronautical industry,
Railway industry,
Nautical sector,
etc...



DESIGN

Artwork,
Products,
Complementary items,
etc...



PUBLIC SPACES AND GOVERNMENT BUILDINGS

Schools,
Museums,
Auditoriums,
Service stations,
town halls,
etc...



RESTAURANT AND CATERING

Bars,
Restaurants,
Casinos,
etc...



HOTELS

Hotels,
Campsites,
etc...



COMMERCIAL AND BUSINESS PREMISES

Franchises,
Private stores,
Shopping centres,
Head offices,
Gymnasiums,
etc...



HOSPITALS

Hospitals,
Laboratories,
Clinics,
etc...

MORE PROPERTIES... ...MORE POSSIBILITIES, MORE APPLICATIONS

Its different properties combine to make KRION[™] an innovative, exclusive material.



A high mineral content

This material is made of two-thirds natural minerals and a low percentage of high-resistance resins.



Ultra-white

Technically KRION[™] achieves a Whiteness of 99,8 %, if we combine this with its high Light Reflective Value, we find a pure and luminous material, something unique in Solid Surface materials.



Antibacterial

KRION[™] does not allow bacteria or fungi to grow or spread. This is an intrinsic property of the composition of the material, without the need for additives to achieve this permanent effect.



Ecological / 100% Recyclable

KRION[™] is an ecological material, as it is 100% recyclable. Any product made of KRION[™] can be reprocessed and used again in its production process.



A lightweight material

Because KRION[™] has a lower density than other solid surfaces, like high-performance porcelain, artificial quartz or natural marble, it is easier to handle, for instance in the creation of countertops and more lightweight furniture, without relinquishing all the other properties of this solid surface.



Compressive strength

A compression test is a test used to determine a material's resistance or capacity to withstand a certain load without it breaking or becoming deformed. Thanks to its high compressive strength, KRION[™] has a compressive performance on a par with stone. These values can be used by designers and/or architects to calculate the design parameters for structures.



Seamless joints

KRION[™] sheets and shapes can be bonded together using bonding kits of a similar composition to KRION[™]. This guarantees uniform physical and chemical properties throughout.



Bending strength

Bending strength is a combination of tensile and compressive strength. This type of load can deform materials by making them sag. Many solid materials cannot withstand high loads and they crack. In contrast, KRION[™] has a high bending strength. Thanks to the high bending strength of KRION[™], it is easier to transport and it can be used to create aesthetically pleasing overhanging sections and surfaces with higher safety guarantees than other materials.



Low thermal conductivity

Thermal conductivity is a physical property, determining a material's capacity to transmit heat. The lower the thermal conductivity, the higher the material's insulative capacity. Using KRION[™] on walls or other surfaces contributes to the energy efficiency of rooms or façades.



Food grade

KRION[™] is a food-grade product and meets US and European standards, meaning it can be used in contact with foodstuffs.



Non porous

KRION™ is a non-porous material and so it prevents the build-up of bacteria. This makes it ideal for places with strict health and hygiene conditions, such as operating theatres or clean rooms.



Easy to clean

Any normal stain, superficial burn, graffiti or marker pen stain can be removed, immediately returning the surface to its original appearance simply by following the recommended cleaning instructions.



Thermoformable

KRION™ sheets can be thermoformed to create curves or shapes of varying radii.



Backlighting

KRION™ Lux can be used to create backlit spaces. By combining different thicknesses of the material, it is possible to create spectacular lighting effects.



Resistant to impacts

KRION™ has the highest capacity to absorb impacts of all solid surfaces. In impact tests using large-diameter balls (324 g) dropped from a height of 1.9 metres, it withstood ten consecutive impacts without breaking, demonstrating its very high resistance.



Resistant to extreme environments

KRION™ surfaces are capable of withstanding extreme environments, such as marine environments, exposure to steam, immersion in water or freezing conditions, amongst others.



Resistant to sunlight

KRION™ stands out for its remarkable stability when exposed to ultraviolet (UV) rays. The most stable colour is white; please consult the manufacturer for information on other colours.



Highly resistant to fire

KRION™ product range is considered to be practically fireproof as it does not allow fire to spread. It is classified as Euroclass B-s1-do according to the UNE-EN 13501 standard and as B1 (with no restrictions) according to DIN 4102.



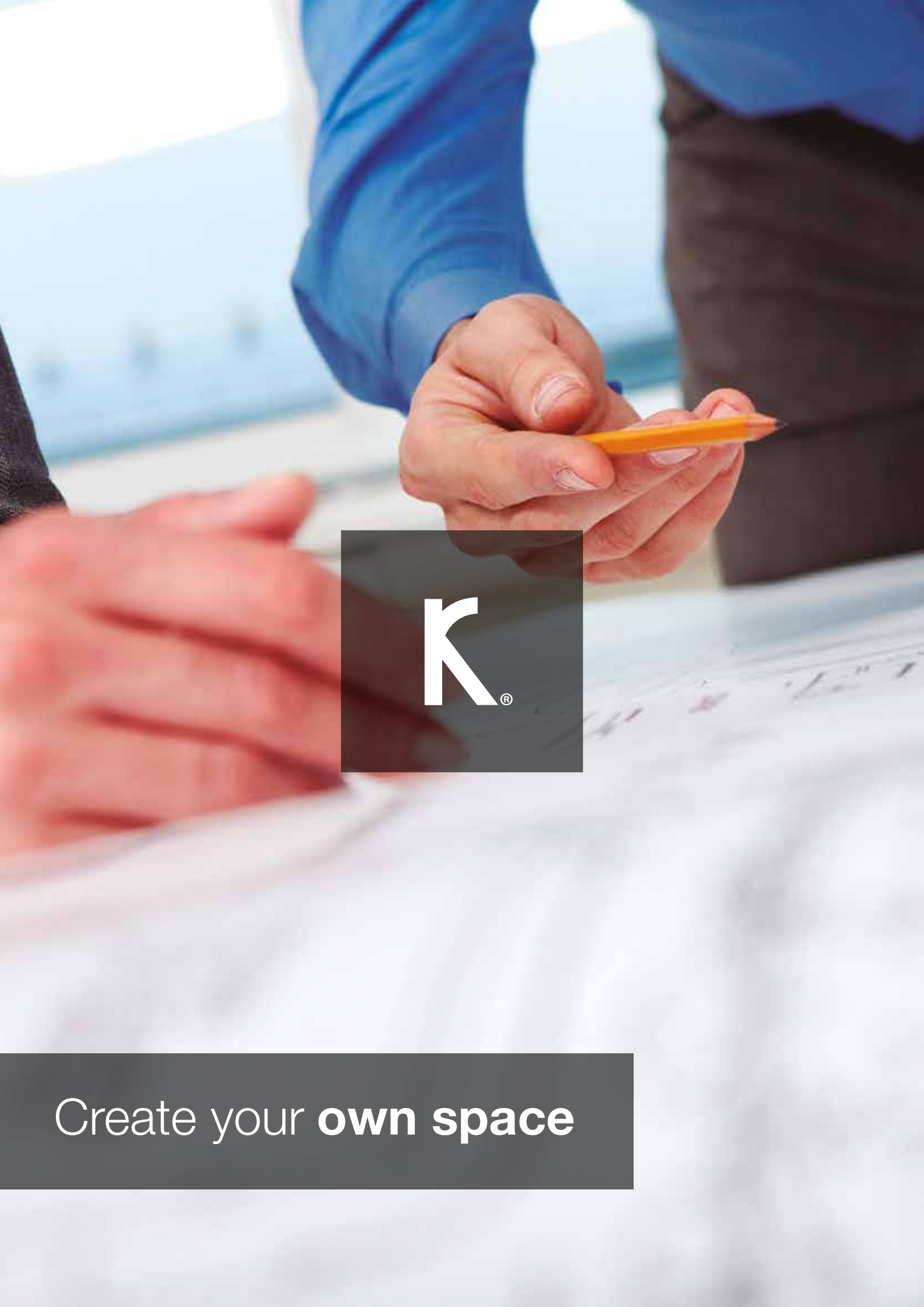
Anti-static

Static electricity is a build-up of electrical charges on the surface of a material, sometimes generated by friction with another material. Many materials are classified according to their electrical resistivity. KRION™ is rated as being anti-static and very close to insulative, according to the ESD (Electrostatic Discharge Association).



Sound insulation

Thanks to its intrinsic physical properties - a seamless, low-density material of varying thicknesses with no pores -, KRION™ helps to insulate noise. This is due to its density, nil porosity, different thicknesses, and lack of seams. More specifically, if the noise level is reduced by 10 decibels, the human ear hears just half the resulting intensity. KRION™ can reduce the noise level by up to 14 decibels.



Create your **own space**

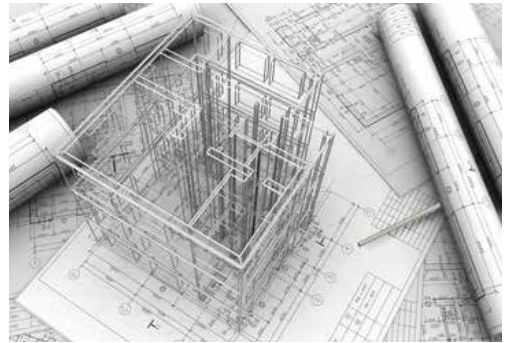
LEND FREE REIN TO THE IMAGINATION

WHATEVER YOU WANT TO CREATE, YOU CAN DO IT WITH KRION™

1

THE PERFECT SOLUTION FOR THE CONTRACT MARKET

With KRION™, designers can take full advantage of all the properties that this material for the market offers.



2

A PIONEERING MATERIAL

KRION™ is a state-of-the-art solid surface. The perfect choice for creating stylish settings.



3

BROAD DESIGN POTENTIAL

KRION™ is a multipurpose, versatile material. Suitable for projects of all kinds, it is able to meet the most demanding of criteria.



4

EASILY ADAPTABLE

Thanks to its intrinsic properties, KRION™ can be adapted to fit in perfectly with design projects without having to make any concessions.

5

FITTING IN WITH CLIENT NEEDS

Whatever the setting, KRION™ can be used to create the perfect design solution. And it can be adapted to fit in with Clients' functional, dimensional and aesthetic requirements.



6

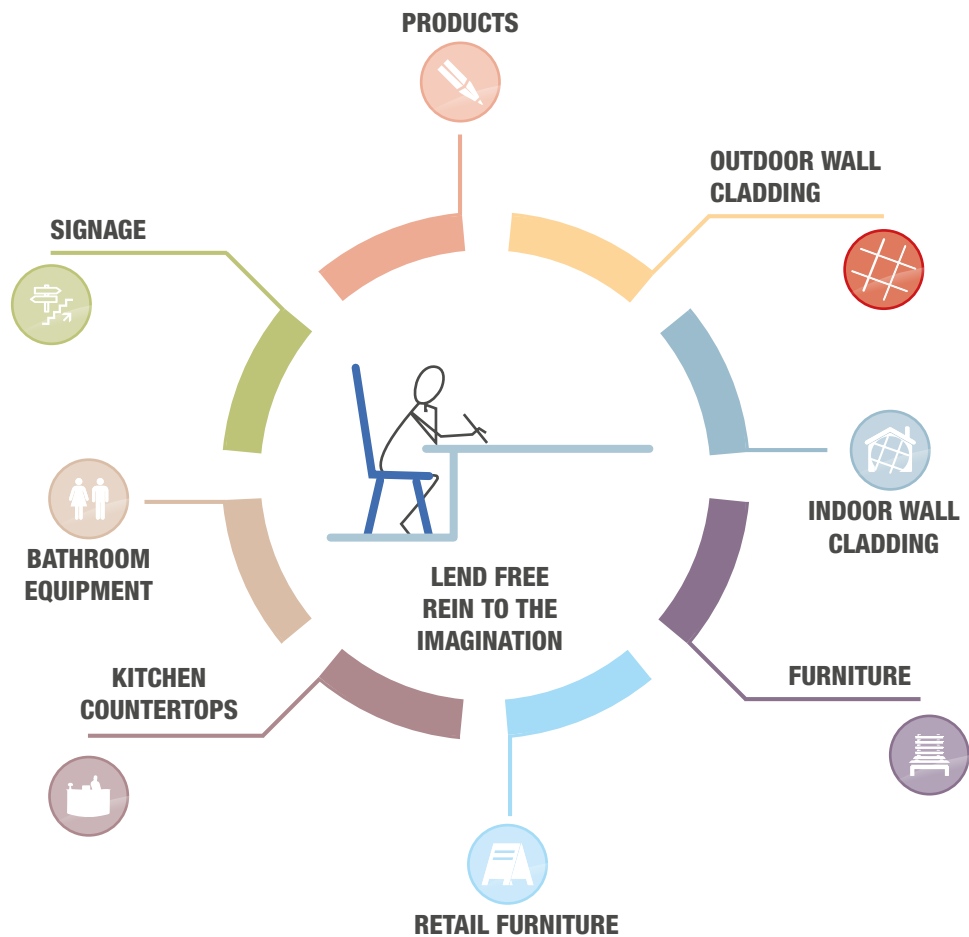
SUITABLE FOR A WIDE VARIETY OF VENUES

Thanks to its broad design potential and exclusive appeal, KRION™ can be used to create unique settings in homes, public buildings, restaurants and bars, shops, hotels, and hospitals, among other places.

APPLICATIONS

INSPIRING NEW IDEAS

The KRION™ range's numerous different series can be used in a wide variety of applications. Each of the properties of KRION™ sheets can inspire a new idea, a new design concept or a new application.



PRODUCTS
Endless designs.



OUTDOOR WALL CLADDING
Façades.





INDOOR WALL CLADDING

Walls, architectural structures.



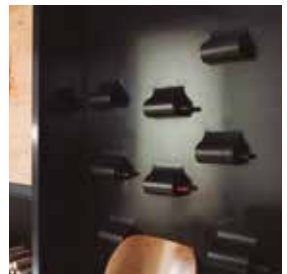
FURNITURE

Counters, office furniture indoor furniture.



RETAIL FURNITURE

Display units, displays, bottle racks.



KITCHEN COUNTERTOPS

Kitchens, bar counters, sales counters.



BATHROOM EQUIPMENT

Bathroom countertops, washbasins shower trays, bathtubs, accessories.



SIGNAGE

Logos, signs.





HOMES

A home's interiors reflect the soul and lifestyle of each of its owners. With KRION™, not only can comfort and functionality be brought to homes, but also a unique personal touch.

Given the endless possibilities that it offers, KRION™ can be used in all rooms in the house: in living rooms, kitchens, bathrooms, bedrooms and as furniture.

Applications



Products



Outdoor wall cladding



Indoor wall cladding



Furniture



Retail furniture



Bathroom equipment



Kitchen countertops



Signage

**THANKS TO ITS EXCLUSIVE
COMBINATION OF AESTHETIC AND
TECHNICAL CHARACTERISTICS,
KRION™ IS THE PERFECT SOLUTION
FOR HOMES.**



Vivienda particular - Miami- USA



Casa Balint / Bétera - Valencia- Spain



Atico / Gandia - Valencia- Spain



Petal by Verónica Martínez / Madrid - Spain



Biela chairs by András Kerégyártó / Törökbálint - Hungary



Exposición Tienda / Alicante - Spain



DESIGN

Only a material like KRION™ makes possible the success of turning ideas into realities. KRION™ will provide the ultrawhite finish.

Applications



Products



Outdoor wall cladding



Indoor wall cladding



Furniture



Retail furniture



Bathroom equipment



Kitchen countertops



Signage

THE LATEST ADVANCES IN PRODUCTION PROCESSES MAKE IT POSSIBLE TO INJECT THE MATERIAL TO CREATE COMPLEX SHAPES.



Aeroporto G. Marconi Bologna / Bologna - Italy





TRANSPORT SECTOR

KRION™ is also the perfect choice for the transport sector, thanks to its durability, imperviousness, resistance to the elements and to corrosion, and its easy adaptability to design projects.

Applications



Products



Outdoor wall cladding



Indoor wall cladding



Furniture



Retail furniture



Bathroom equipment



Kitchen countertops



Signage

**THANKS TO ITS DURABILITY,
WATERPROOF AND CORROSION
RESISTANCE KRION™ IS A
PREFERABLE OPTION IN THE
NAUTICAL MARKET.**

HOTELS

Its extensive design possibilities make it possible to create spaces from hotel lobbies through to room elements, including furnishings, decoration or bathroom fixtures.

KRION™ also offers a wide range of possibilities for spa areas thanks to its non-porous surface and anti-bacterial properties.

Applications



Products



Outdoor wall cladding



Indoor wall cladding



Furniture



Retail furniture



Bathroom equipment



Kitchen countertops



Signage

SPAS, SWIMMING POOLS, SAUNAS OR TURKISH BATHS ARE JUST SOME OF THE ELEMENTS THAT CAN BE CREATED WITH THIS VERSATILE MATERIAL.



Hard Rock Hotel / Ibiza - Spain



AC-Marriott Cuzco / Madrid - Spain



Hotel Zenit / San Sebastián - Spain



Hotel Son Moll / Mallorca - Spain



HEALTHCARE

KRION™ is an ideal material for use in healthcare centres. Thanks to its anti-bacterial properties and additive-free composition, it is recommended for use in consulting rooms or wards, curing stations or even operating theatres, where optimum hygiene conditions are essential.

Also, the possibility of chemically welding the sheets together and curving them makes it possible to create continuous, seamless surfaces, without joints or corners where microorganisms can accumulate.

Applications



Products



Outdoor wall cladding



Indoor wall cladding



Furniture



Retail furniture



Bathroom equipment



Kitchen countertops



Signage



Clínica Las Condes / Las Condes - Chile



Farmacia Gran Via / Valencia - Spain

KRION™ EXCEEDS THE CRITERIA OF THE US ASTM G 21 AND THE EUROPEAN UNE-EN ISO 846 STANDARDS.



Font de Mora - Farmacia / Vila-real - Spain



Hospital Virgen del Castillo / Murcia - Spain



Noah Bank / New York - USA



Emporium / Bangkok - Thailand



PC Experience Fnac / Lisboa - Portugal



Arenal Perfumeria / Ourense - Spain



Bershka / Bologna - Italy



COMMERCIAL AND BUSINESS PREMISES

KRION™ offers infinite possibilities for the design of commercial spaces, and is a key element in creating brand awareness and presenting products in the best possible way.

KRION™ offers infinite possibilities for commercial decoration, with an extensive palette of colours and the ability to connect sheets and curve them, to obtain genuine combinations of colours and ergonomic shapes.

Applications



Products



Outdoor wall cladding



Indoor wall cladding



Furniture



Retail furniture



Bathroom equipment



Kitchen countertops



Signage

SOLID SURFACES ARE THE OPTION PREFERRED BY THE MAIN INTERNATIONAL FRANCHISES, AS DIFFERENT ELEMENTS CAN BE UNIFORMLY INTEGRATED.



RESTAURANT AND CATERING

The comfort and warmth of KRION™ make it an ideal material for use in interior design projects for the catering trade sector. It is particularly suitable for use in restaurants as it is easy to clean and only requires minimum maintenance. Its durability, the possibility of shaping it to obtain any type of design and its anti-bacterial qualities mean it can be used for practically any type of application.

Applications



Products



Outdoor wall cladding



Indoor wall cladding



Furniture



Retail furniture



Bathroom equipment



Kitchen countertops



Signage

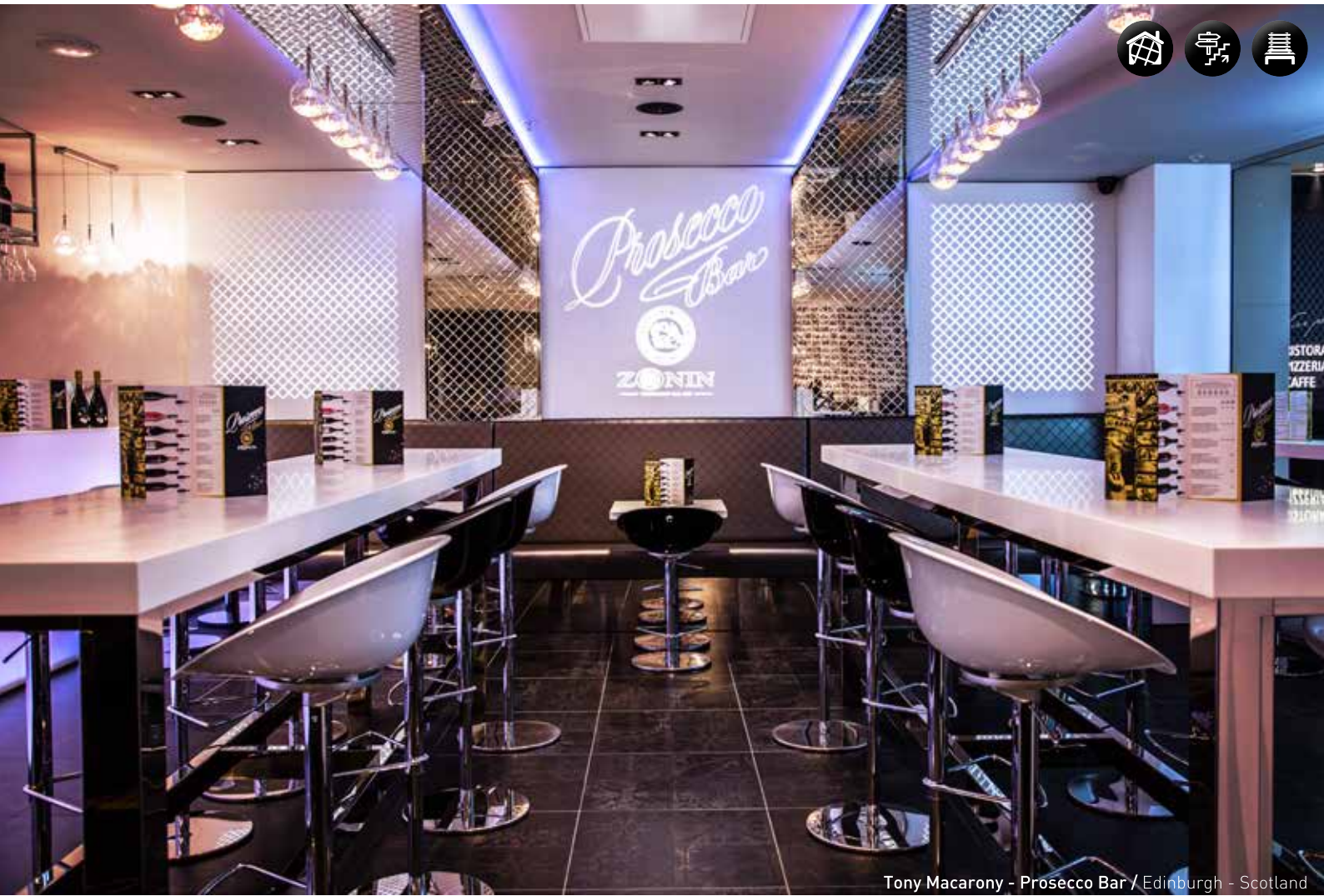
SPECIFIC CURVE RADII CAN BE OBTAINED BY APPLYING HEAT AND PRESSURE FOR A SPECIFIC PERIOD OF TIME IN ORDER TO ACHIEVE THE REQUIRED SHAPE.



Restaurante Bambú / Salamanca - Spain



Restaurante Otto / Madrid - Spain



Tony Macarony - Prosecco Bar / Edinburgh - Scotland



LIDO Restaurant / Toon - Scotland



El Centro, Northeastern Illinois University / Chicago - USA



Club de Tenis / Valencia - Spain



Embajada de Francia / Bangkok - Thailand



Doga Kol. / Istanbul - Turkey



PUBLIC SPACES AND GOVERNMENT BUILDINGS

KRION™ is specially suited for public spaces used by large numbers of people. It meets the maximum hygiene requirements for installation in public bathrooms and other public areas. As a material that is non-porous and easy to clean and repair in situ, it is ideal for continuous use in public areas, and is highly resistant to acts of vandalism.

Applications



Products



Outdoor wall cladding



Indoor wall cladding



Furniture



Retail furniture



Bathroom equipment



Kitchen countertops



Signage

EVEN WHEN AFFECTED BY SERIOUS STAINS, THE MATERIAL CAN BE RETURNED TO ITS ORIGINAL APPEARANCE SIMPLY BY FOLLOWING THE RECOMMENDED CLEANING INSTRUCTIONS.



KRION™

THROUGHOUT THE WORLD

AMERICA

Sede Google – Santiago de Chile – Chile
 Clínica Las Condes – Chile
 Forever 21 – Chile
 Tecnológico – Antioquia – Colombia
 Clínica del corazón - Bucaramanga - Colombia
 Centro comercial Portal del Norte - Medellín - Colombia
 Constructora Colpatria – Colombia
 Mapfre – México
 Toilets – Torre Levante – México
 Laboratory areas – Pluspetrol – Perú
 Private house La Romana – Rep. Dominicana
 Casino Enjoy – Uruguay
 Ava matsu restaurant – Los Angeles – USA
 Environdental – Los Angeles CA – USA
 Hawaii airport terminal B – USA
 Google corporate office Irvine CA – USA
 Doc Alexander dental Santa Barbara CA – USA
 Downtown family Dental Torrance CA – USA
 Syneger dental beverly hill CA – USA
 LAX airport America airline – USA
 Vanilla flex at LAX terminal Bradley – USA

AFRICA

Private house - Morocco
 Raffinity Casablanca - Morocco
 Lagos - Posmoreti - Nigeria

ASIA

Ghayathi hospital – Abu Dhabi
 Omeir hospital – Abu Dhabi
 Sofitel Hotel and office tower Haikou – China
 Adnoc research center – Dubai
 Climate control room & spa – Dubai
 Dubai duty free – Dubai
 Formarke school – Dubai
 Private house – Delhi – India
 Harvey Nichols – Kuwait
 Police Station – Muscat – Oman
 Hotel Astoria – Boracay – Philippines
 Hotel Astoria – Manila – Philippines
 Marsa Malaz Hotel – Doha – Qatar
 Milaha Main office – Doha – Qatar
 Apartment Condominium – Singapore
 Bao Hong Residential – Taipei – Taiwan
 Tango Hotel – Taipei – Taiwan
 Emporium shopping mall – Bangkok – Thailand
 French Embassy – Bangkok – Thailand
 KFC - Bangkok – Thailand
 Bershka Store – Istanbul – Turkey
 Doga Koleji – Istanbul – Turkey



World Wide **Projects**

EUROPE

Private house – Geel – Belgium
 YOGO – Frozen Yogur Bar – Finland
 Conseil regional d'aquitaine – Bordeaux – France
 Institut D'optique D'aquitaine – Bordeaux – France
 Boulangerie Paul / Brioche Dorée – France
 Hotel Akoya , Ile de la Réunion – France
 Escuela Olympe de Gougues – Le Plessis Trévisé – France
 Win Age – Montpellier – France
 Société Générale – Carquefou – Nantes – France
 Empreinte Lille – Lille – France
 HI-PANDA – Paris – France
 Hotel Chavanel – Paris – France
 Nespresso Champs Elysées – Paris – France
 Horseland – Presmesques – France
 Banque Populaire de l'Ouest – Rennes – France
 Toulouse Stadium - Toulouse – France
 Spa Bordeaux – France
 Ehpad de vielle st girons – France
 Hydromassage pool – Peter Grube – Germany
 Airport – Bologna – Italy
 Bershka – Bologna – Italy
 Greda Headquarters – Carpi – Italy
 Restaurant Delfino Blu - Lipomo – Italy
 Auditorio - Roma – Italy
 BMW – Italy
 Hotel Rubens – Italy
 Kerasan – Kosovo

Hotel Les Terrasses d'Eze – Montecarlo – Monaco
 Yatch Club – Montecarlo – Monaco
 Bershka – Hilversum – Netherlands
 Private house – Oradea – Rumania
 Museo del cafe – Lisbon – Portugal
 Airport Pulkovo – S.Petersburgo – Russia
 IM CLINIC – Barcelona – Spain
 Gynecological Clinic and Dental – Castellón – Spain
 Attic A-Cero – Gandia – Spain
 Dental Clinic Ortega&Cubillo – Granada – Spain
 Hard Rock – Ibiza – Spain
 3M – Madrid – Spain
 AC-Marriott Cuzco – Madrid – Spain
 Bershka – Madrid – Spain
 Hotel Son Moll – Mallorca – Spain
 Miss Sushi – Madrid – Spain
 Gerhardt Braun Gallery – Mallorca – Spain
 Hotel Melia Don Pepe – Marbella – Spain
 Hospital Virgen del Castillo – Murcia – Spain
 Imagine Lounge Bar – Murcia – Spain
 Arenal Perfumery – Ourense – Spain
 Balabushka – Salamanca – Spain
 Bambú – Salamanca – Spain
 Ocean Club – Salamanca – Spain
 Hotel Zenit – San Sebastian – Spain
 Hotel Taburiente – Tenerife – Spain
 Artexpreso – Valencia – Spain
 Casino Cirsa – Valencia – Spain

House Balint – Valencia – Spain
 Miss Sushi – Valencia – Spain
 Vertical – Terrace Restaurant - Valencia – Spain
 Sister Cities Plaza – Valladolid – Spain
 Chalet - Alpes D'huez – Switzerland
 Karisov Swimming Pool – Epalinges – Switzerland
 Chocolatier – Switzerland
 The marque hotel – Cambridge – UK
 British Airways loung – Edinburgh – UK
 Ocean Buses – Edinburgh – UK
 Tony Macaroni – Edinburgh – UK
 Hotel Melia White House – London – UK
 Melia – London – UK
 Lido Restaurant – Troon – UK
 Santander – UK
 BMW – UK

OCEAN

Adelaide Central Plaza – Adelaide – Australia
 Shopping Mall – Sidney – Australia



HOME



LOFT (PHILADELPHIA, USA)



VIVIENDA PARTICULAR (VALENCIA, SPAIN)



VIVIENDA MUHER (MURCIA, SPAIN)



VIVIENDA PARTICULAR (JÁVEA, SPAIN)



VIVIENDA PARTICULAR (MURCIA, SPAIN)



VIVIENDA PARTICULAR (TERUEL, SPAIN)



VIVIENDA PARTICULAR (CÁDIZ, SPAIN)



BALINT HOUSE (VALENCIA, SPAIN)



DESIGN



MOBILIARIO NH HOTELES (MADRID, SPAIN)



RADIO BY RASKL. DESIGN STUDIO & WORKSHOP (NEWCASTLE, UK)



YERBA - VERÓNICA MARTÍNEZ (MADRID, SPAIN)



CAPSULA - NIHIL ESTUDIO KAPPS (VALENCIA, SPAIN)



FRUTERO INSPIRA - UJI (CASTELLÓN, SPAIN)



AFTERNOON DELIGHT - INSTITUTO EUROPEO DI DESIGN (MADRID, SPAIN)



MYLITOPHAN (SEVILLA, SPAIN)



REGLETA - VIBEX (CIUDAD REAL, SPAIN)



SOFITEL HOTEL (HAIKOU, CHINA)



RADISSON BLU MALL OF AMERICA (MINNESOTA, USA)



HOTEL CHAVANEL (PARIS, FRANCE)



NH HOTELES (MADRID, SPAIN)



HOTEL FELICIEEN (PARIS, FRANCE)



HOTEL SON MOLL (MALLORCA, SPAIN)



IBEROSTAR GRAND HOTEL MENCEY (TENERIFE, SPAIN)



AC-MARRIOTT CUUSCO (MADRID, SPAIN)



HEALTHCARE



CLÍNICA DENTAL ORTEGA & CUBILLO (GRANADA, SPAIN)



CLINICA DENTAL Y GINECOLOGICA (CASTELLÓN, SPAIN)



HOSPITAL PROVINCIAL (CASTELLÓN, SPAIN)



FONT DE MORA - FARMACIA (VILA-REAL, SPAIN)



CLÍNICA CETA (MADRID, SPAIN)



HOSPITAL VIRGEN DEL CASTILLO (MURCIA, SPAIN)



LABORATORIO KRION (VILA-REAL, SPAIN)



HOSPITAL VIRGEN MACARENA (SEVILLA, SPAIN)



COMMERCIAL AND BUSINESS PREMISES



BERSHKA GRUPO INDITEX (ISTANBUL, TURKEY)



GREDA (CARPI, ITALY)



BERSHKA GRUPO INDITEX (BOLOGNA, ITALY)



TROUTMAN SANDERS (VIRGINIA, USA)



BAO HONG RESIDENTIAL (TAO YUAN, TAIWAN)



CENTRO COMERCIAL MADRID SUR (MADRID, SPAIN)



SMÖÖY FROZEN YOGURT (VALENCIA, SPAIN)



MÁLAGA FC (MÁLAGA, SPAIN)



RESTAURANT AND CATERING



CHEESE BAR - HOTEL MELIÁ SARRIÀ (BARCELONA, SPAIN)



RESTAURANTE OTTO (MADRID, SPAIN)



MISS SUSHI (MADRID, SPAIN)



MERCADO SAN AGUSTIN (TOLEDO, SPAIN)



RESTAURANTE VINATEROS 28 (MADRID, SPAIN)



JOGO - FROZEN YOGUR BAR (FINLAND)



RESTO LE 1741 (STRASBOURG, FRANCE)



DA VINCI (VILA-REAL, SPAIN)



PUBLIC SPACES AND GOVERNMENT BUILDINGS



ECOLE MATERNELLE OLYMPE DE GOUGES (FRANCE)



3M (MADRID, SPAIN)



DOGA KOL. (ISTANBUL , TURKEY)



TRIBUNAL (LORIENT, FRANCE)



PLAZA CIUDADES HERMANADAS (VALLADOLID, SPAIN)



CENTRO DE EMPLEO LE GRAND NARBONNE (NARBONNE, FRANCE)



CASINO GRAN VIA (MADRID, SPAIN)



GUARDERIA MUNICIPAL VILLANUBLA (VALLADOLID, SPAIN)

TECHNICAL FEATURES

The technical characteristics of KRION™ Lux are shown below, in accordance with the relevant standards. KRION™ Lux has also been awarded certificates like the NSF⁽¹⁾, Greenguard⁽²⁾, and SCS⁽³⁾ certificates, together with fire resistance certificates like the B-s1-d0⁽⁴⁾, B1⁽⁵⁾ (Germany), or UL94HB⁽⁶⁾ and NFPA 259⁽⁶⁾ (United States) certificates.

It also holds special certificates like the Russian hygiene and fire⁽⁷⁾ safety certificates, the National Test Center of Polymer and Building Materials certificate, the French CSTB⁽⁸⁾ for façades and the European Reach certificate⁽⁹⁾...

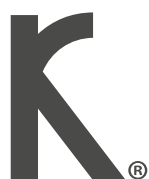
TECHNICAL FEATURES

PORCELANOSA'S KRION™ solid surface is rated as having a Euroclass B s1 fire resistance in accordance with the EN 13051-1:2003 standard and B1 fire resistance (with no restrictions) according to DIN 4102. It has been awarded Greenguard Gold and NSF/ANSI 5 Food Equipment Materials certificates and complies with REACH, with certificate of compliance HKHL 1501002788JL.

Property	Method	Result	Units / Measures
Density	ISO 1183 / ASTM D792	1.71 - 1.77	g/cm ³
Flexural modulus of elasticity	ISO 178 / ASTM D790	8500 - 11620	MPa
Flexural strength		60 - 78	MPa
Tensile modulus	ISO 527 / ASTM D638	9380 - 11325	MPa
Tensile strength		40 - 60	MPa
Compressive strength	ISO 604	97 - 101.2	MPa
Impact resistance (ball drop)	ISO 19712-2 UNE EN 438-2 ISO 4586-2 NEMA LD 3	Satisfactory (No break)	324g ball / Height 1.9m (2m)
Abrasion resistance	UNE EN 438-2 ISO 4586-2	0.028	% mass / Δmass(%) every 25 rev.
Resistance to boiling water	UNE EN 438-2 ISO 4586-2 NEMA LD 3	0.1 - 0.30	% weight
		0.1 - 0.30	% thickness
		Level 5: No change	Levels 1-5
Resistance to bacteria	ISO 846 / ASTM G22	No proliferation	
Resistance to fungi	ISO 846 / ASTM G21		
Anti-slip properties depending of grit finish from (40-600)	UNE ENV 12633	Rd = 40 Class 2 - Rd = 12 Class 0	SR (Roughness) Pendulum
	ASTM C1028	0.8 - 0.69	Dry Static Coefficient
		0.82 - 0.62	Wet Static Coefficient
	ANSI A.137.1:2012	0.7 - 0.35	Wet Dynamic Coefficient
Dimensional stability	ISO 4586-2 UNE EN 438-2	0.02 (90% HR & 23°C)	% change in length
		0.08 (23% HR & 23°C)	
Dimensional stability at high temperatures	UNE-EN 438-2	0.18 (70°C)	% change in length /
		0.10 (95% HR & 40°C)	
Linear thermal expansion	ISO 11359-2 ASTM D696	3.72 x 10 ⁻⁵	λ (mm/m °C)
Coefficient of thermal expansion	UNE-EN 14581	0.112	3*λ (mm ³ /m ³ °C)
Resistance to artificial weathering. Xenon arc (3000h)	ISO 4586-2 UNE EN 438-2 ISO 4892-2	Level 5: No change	Grey scale. Levels 1-5
Resistance to ultra-violet light. UV-313 lamp (1500 hrs)	UNE EN 438-2 ISO 4892-3	Level 4,5: Slight change	Grey scale. Levels 1-5
Lightfastness (122 hrs)	ISO 19712-2 UNE 56868:2002	Level 5: No change	Grey scale. Levels 1-5
Colour fastness	ISO-19712-2	>6	"blue wool"

Property	Method	Result	Units / Measures
Thermal resistance	UNE EN 12667	q = 104.8	W / m
		R = 0.05	m ² . K / W
		λ = 0.396	W / m . K
Thermal shock resistance (90 - 20 °C / 194 - 68 °F)	ISO-19712-2	Satisfactory	250 Cycles
Surface resistance to damp heat	ISO 19712-2 ISO 4586-2	Satisfactory Level 5: No change	Levels 1-5
Surface resistance to dry heat	ISO 19712-2 UNE-EN 438-2 ISO 4586-2 UNE 56867 UNE 56842	Satisfactory Level 4: Slight change in gloss degree only visible from certain angles	Levels 1-5
Surface defects	ISO-19712-2	Satisfactory	No defects
Barcol hardness	ISO-19712-2 ASTM D 2583	60 - 65	Units
Rockwell hardness	ISO-19712-2 ASTM D785 ISO-2039-2	> 85	Units
Falling ball test	ISO-19712-2 ISO-2039-1	240 - 280	N/mm ²
Resistance to cigarette burns	ISO 19712-2 UNE-EN 438-2	Satisfactory. Level 4: Slight change in gloss degree only visible from certain angles	Levels 1-5
Load test	ISO-19712-2	Satisfactory (No cracks or fissures were observed after the test)	0.12 mm (residual deflection)
Chemical resistance (Method A)	ISO-19712-2	Satisfactory 5 (In all cases, except acetone with level 4)	Levels 1-5
Chemical resistance (Method B)	ISO-19712-2	27	Cleanliness rating from 0 to 75
Chemical resistance	UNE 56867	Satisfactory	
	UNE-EN 13501-1	B s1 d0	Euroclase
	ASTM E84	Class A	"IBC class"
	DIN 4102-1	B1	
	UL94HB	Satisfactory	
Scratch resistance	UNE-EN 438-2	4	Levels 1-5
	Eq. Mohs	3	
Cracking resistance	UNE-EN 438-2	5	Levels 1-5
Surface permeability	NF T 30-801	8	g/m ² day
Resistance to water vapor	UNE 56867 UNE 56842	Satisfactory	
Specific heat	UNE 23721	1.361	J/g K
Water absorption	ASTM D570	0.03	%
Deflection temperature (load 1.82 N/mm ²)	ASTM D648	>95	°C

- NSF / ANSI 5: Food Equipment Materials (Max temperature 100°C/212°F).
- Greenguard: Product certified for Low chemical emissions UL.COM/GG.
UL 2818 = GOLD. For buildings Materials, Finishes and Furnishings.
- SCS: Pre-consumer recycled Content.
- EN13501: Euroclases.
- DIN4102: B1, with no installation restrictions.
- UL94HB: Flammability of Plastic Materials for Parts in Devices and Appliances.
NFPA 259: Test method for potential heat of building materials.
- GOST R: Hygiene certificate.
GOST R: Fire safety certificate.
- CSTB: Avis technique 2/14-1624 "Système Porcelanosa KRION™ Lux".
- Reach compliance: An analysis of 161 substances (SVHC) published by the ECHA, in which KRION™ Lux was found to have none of them. HKHL 1501002788JL certificate.



Legal notice: The images, texts and data are the property of SYSTEM-POOL, S.A., with registered offices at Carretera Vila-real – Puebla de Arenosa (CV-20), 12.540 Vila-real (Castellón). The express written consent of SYSTEM-POOL, S.A., shall be required for the partial or total use or disclosure of the said material. SYSTEM-POOL, S.A., holds sole rights over all forms of use of the said material and, in particular, the right to its reproduction, distribution, public communication and transformation. All the said material is protected by intellectual property laws and any undue use may result in penalties, even of a criminal kind.

Krion®
PORCELANOSA SOLID SURFACE

www.krion.com