



B E S P O K E  
F A Ç A D E S



**KRION®**  
PORCELANOSA SOLID SURFACE





# I N D E X

---

**KRION®** 9 P A G E

---

**CASE STUDY** 17 P A G E

---

**ENGINEERING CONSULTANT** 31 P A G E

---

**PROJECTS** 43 P A G E







An aerial photograph of a dense, lush green forest. A winding road or path is visible, cutting through the trees. The lighting is bright, creating a vibrant green scene. The text is overlaid on the right side of the image.

# **Alumina compact panel**

**100% RECYCLABLE**

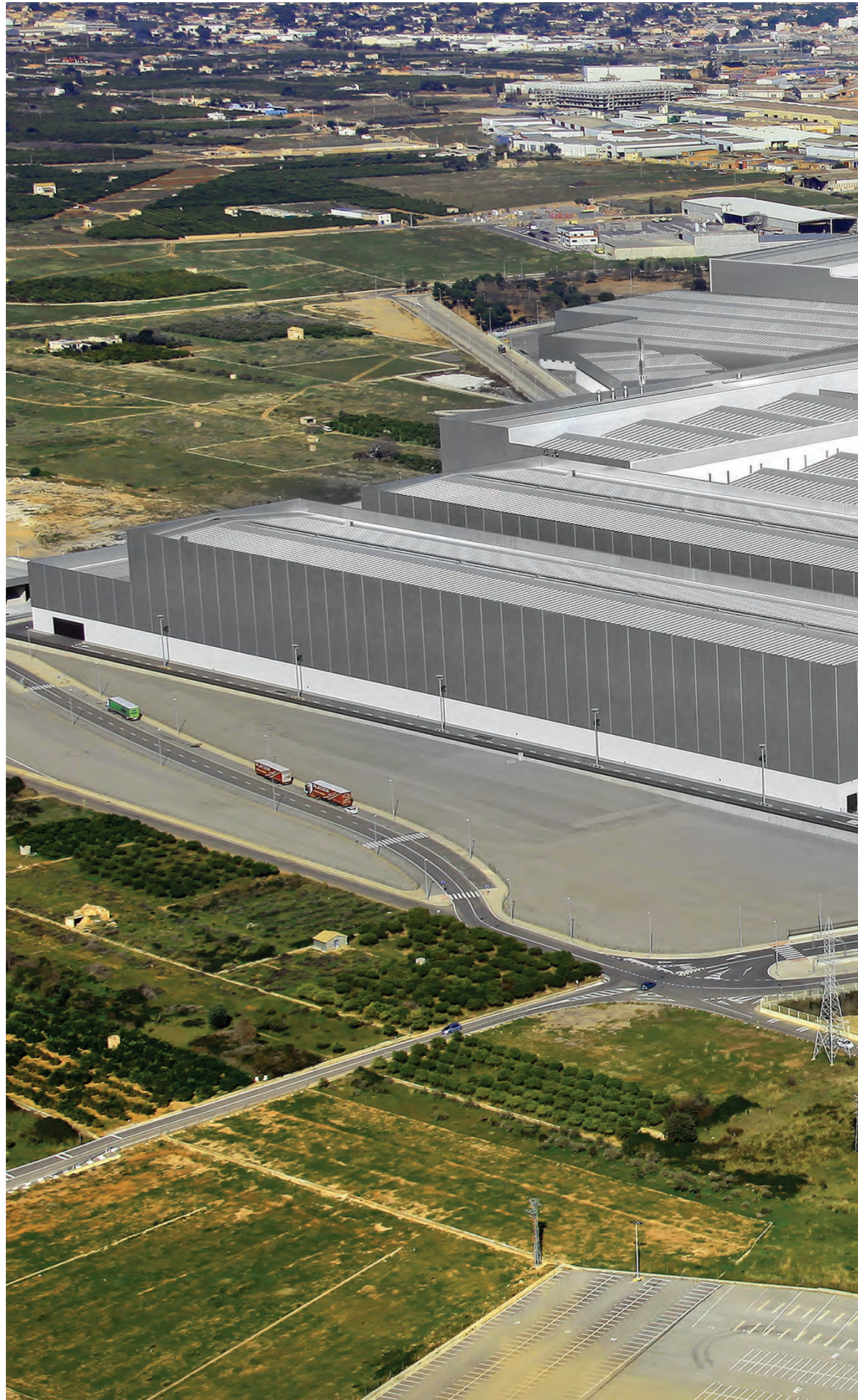


# PORCELANOSA Grupo

PORCELANOSA Group is the international leader in Solid Surface facade design and installation. KRION®'s excellent features, together with the technical service offered by butech to customers and architects, has made possible to carry out projects in virtually all continents. Commercial buildings, public buildings, hotels and even particular homes have been conceived with this system.

A restrictive quality control policy in all the elements involved in the facade, the experience of butech's Technical Department in project development and the expertise of our facade installation teams, make of KRION® the best choice for this type of projects.

Architects can already design buildings in which the light and the white color of KRION® are the stars.















# PORCELANOSA SOLID SURFACE KRION

It was crucial to develop a new type of Solid Surface for exteriors which could solve the technical challenges that this type of material posed, such as the fixing system or the contact or joint between sheets.

PORCELANOSA Group took on the challenge and the result is KRION®, state-of-the-art Solid Surface, developed by SYSTEMPOOL, and the concealed clip fixing system from butech.

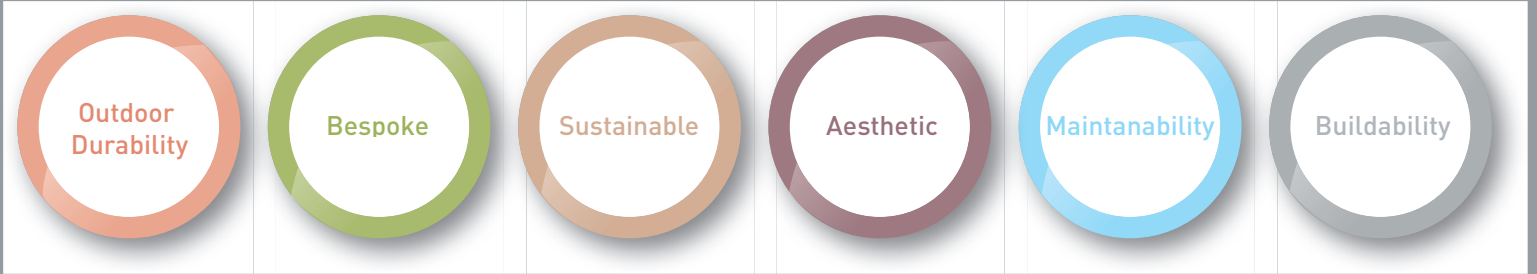
The quality of KRION® sheets offered by SYSTEMPOOL together with butech's engineering and facade installation service have already become international standards for projects with Solid Surface facades.



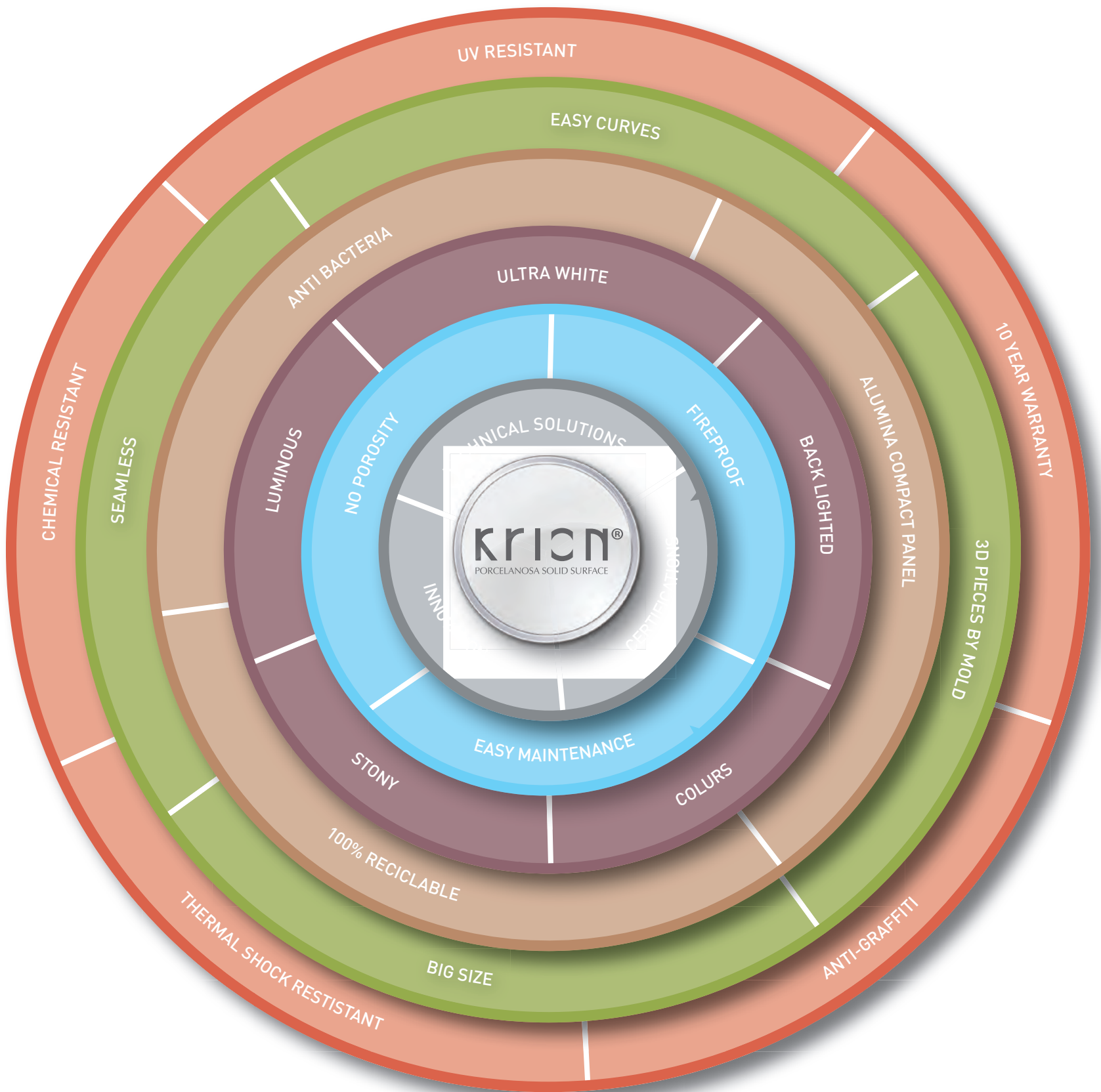
**COMPARISON WITH OTHER MATERIALS**

	WOOD	SOLID SURFACE GENERAL	GLASS	METAL	STONE	KRION <sup>®</sup>
Non Porosity	✓✓	✓✓✓✓✓	✓✓✓✓✓	✓✓✓✓✓	✓✓	✓✓✓✓✓
Rigidity	✓✓✓	✓✓✓✓	✓✓✓	✓✓✓✓✓	✓✓✓	✓✓✓✓
Reparability	✓	✓✓	✓✓	✓✓✓	✓	✓✓✓✓✓
Ambient corrosion resistance	✓✓✓	✓✓✓✓✓	✓✓✓✓✓	✓✓✓	✓✓✓	✓✓✓✓✓
Lightness	✓✓✓✓✓	✓✓✓	✓✓✓✓	✓✓	✓✓	✓✓✓✓
Temperature resistant	✓	✓✓✓✓	✓✓✓✓	✓✓✓✓	✓✓✓	✓✓✓✓✓
Translucency	✓	✓	✓✓✓✓✓	✓	✓	✓✓✓
Thermoformability	✓✓✓	✓	✓✓✓	✓	✓	✓✓✓✓✓
Anti-Bacteria	✓✓	✓✓✓✓✓	✓✓✓✓	✓✓✓	✓	✓✓✓✓✓
Seamless	✓	✓	✓✓	✓✓✓	✓	✓✓✓✓✓
UV resistant	✓✓	✓✓✓✓	✓✓✓✓	✓✓✓✓	✓✓✓✓	✓✓✓✓✓
Backlight	✓	✓	✓✓✓	✓	✓	✓✓✓✓✓
Frost proof	✓✓✓✓	✓✓✓✓✓	✓✓✓✓✓	✓✓✓	✓✓	✓✓✓✓✓
Easy tooling	✓✓✓✓✓	✓✓	✓✓	✓✓✓	✓	✓✓✓✓✓
Colors	✓✓✓	✓✓✓✓	✓✓✓	✓✓✓	✓✓	✓✓✓✓✓
Pure white	✓	✓✓✓	✓	✓✓✓	✓✓	✓✓✓✓✓





## PROPERTIES





## KRION® PROVIDES NEW TECHNICAL FEATURES TO THE SOLID SURFACE FAMILY, WHICH LEAD TO NEW POSSIBILITIES AND UNPRECEDENTED APPLICATIONS

The remarkable improvements in fire resistance, weather resistance, or transformation methods in three-dimensional molds are noteworthy, which make KRION® a versatile and multi-faceted material, able to adapt to all types of projects, satisfying the most demanding expectations. It is important that the professional embraces and understands the advantages that KRION® offers for making use of all the possibilities of this Contract material par excellence.



### INTENSE WHITENESS

Technically, KRION® Stone reaches a whiteness level higher than 99.8%, which in combination with its high refraction index results in a bright and pure material, something that is unprecedented in solid materials.



### HIGH FIRE RESISTANCE

The KRION® product family is regarded as virtually fireproof as it does not allow the spread of fire; it is classified according to UNE-EN 13501 as Euroclass b-s1-d0.



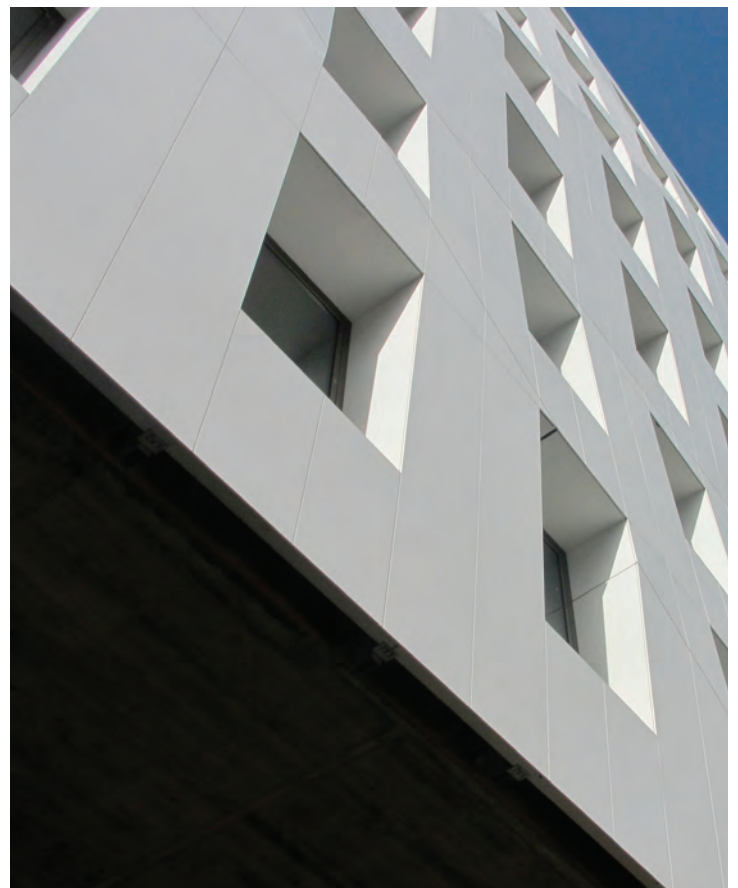
### UV RESISTANCE TO EXTREME ENVIRONMENTS

KRION® surfaces are prepared to withstand extreme environments, such as for example marine environments, exposure to steam, immersion in water, or icy environments among others.



### SUSTAINABILITY

KRION® is a 100% recyclable material. All products manufactured with KRION® can be reprocessed and used again in the production cycle once their life cycle is completed.







## HIGH RESISTANCE TO CHEMICAL ATTACKS

The excellent response from KRION® to chemical attacks makes it ideal for use in laboratories, professional installations, and all types of uses where it is necessary to regenerate the surface easily and leave it effortlessly in its original state.



## EASY CLEANING

In case of any common stain, surface burn, graffiti, or marker stains, the material can be immediately returned to its original state by simply following our recommended cleaning instructions.



## SUITABLE FOR USE WITH FOOD

KRION® is suitable for use with food, meeting North American and European regulations, so it can be used in contact with food.



## COLORS

KRION® has a broad palette, with over 90 colors being sold. There is also the possibility of producing special or corporate colors for carrying out projects that exceed the minimum required amounts.



## 10 YEAR WARRANTY

KRION® warrants the built project with limits for 10 years.







## FREEDOM OF SHAPES AND FIGURES

KRION<sup>®</sup>'s slabs can be thermo-shaped, and curves and figures with soft rays can be generated using this technique.



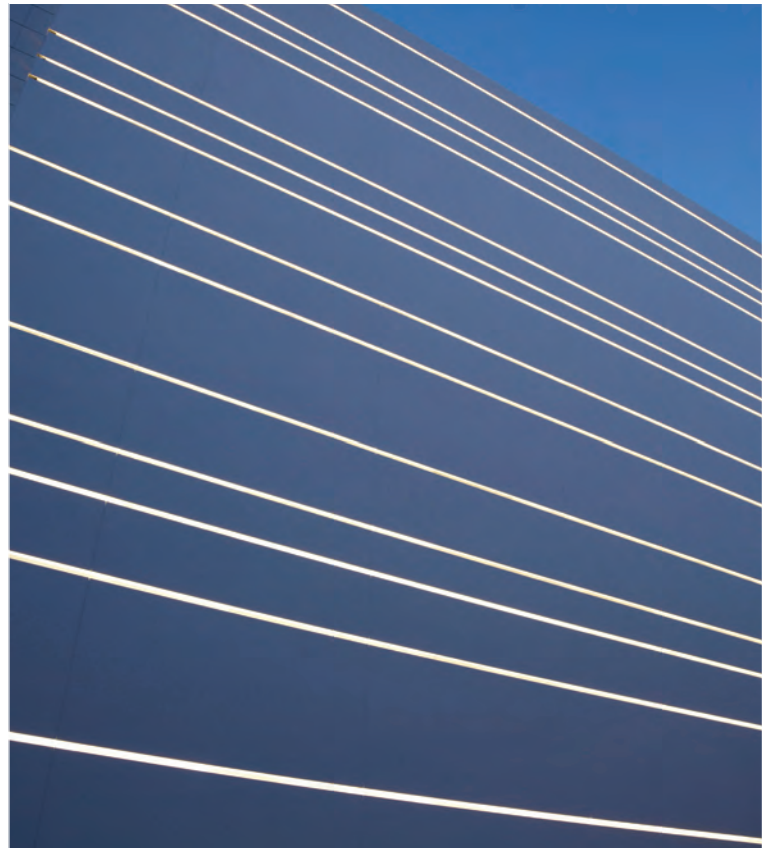
## BACKLIT

Besides being able to include light as a facade decorative supplement, the KRION<sup>®</sup> Pure Lux product family offers the possibility of backlighting a solid surface thanks to the translucent characteristics of the material itself.



## NO JOINTS. INVISIBLE CONNECTIONS

KRION<sup>®</sup> figures and slabs can be joined together using chemical union kits made with the same formula used in the manufacture of the pieces, in order to guarantee the chemical and physical continuity of the joints.





## MANUFACTURE



### THERMOSHAPED, 3D MOLDS

KRION®'s exclusive formulation and the use of the latest advances in production processes, allow the injection of the material into molds for obtaining three-dimensional figures.



### KRION® SHEET / THERMOCURVING

Another major advantage offered by the use of KRION® Pure Lux outdoors is being able to design curved areas with no joints; these designs could not be made at present with other types of materials currently available in the market.



### KRION® SHEET / MACHINING

The possibility of using numerically controlled machining, together with the possibility of joining the pieces afterwards, makes such materials suitable for developing any conceivable design that combines formats, mosaics, pixelations, irregular pieces, etc...









# 2

## C A S E S T U D Y

---



Initiation

**DESIGNING**

---



1 st month

**TECHNICAL STUDY**

---



3 rd month

**MOCK UP & TEST**

---



4 th month

**PRODUCTION**

---



6 th month

**INSTALLATION**

---



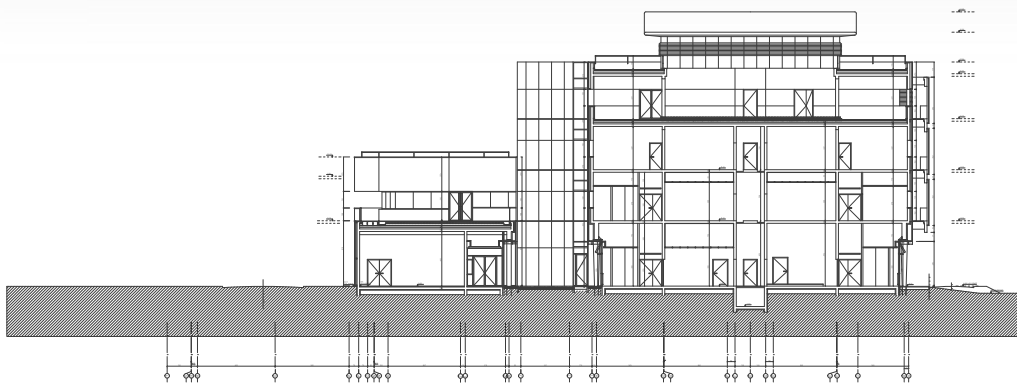
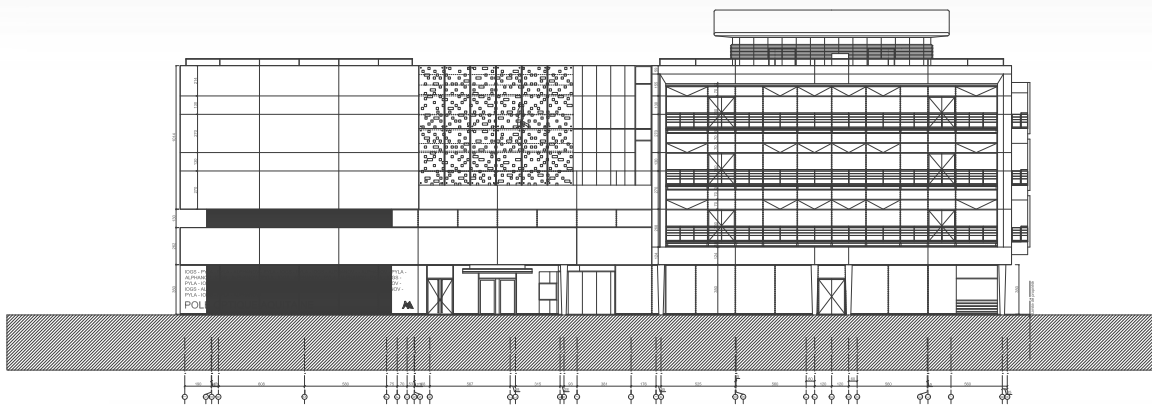
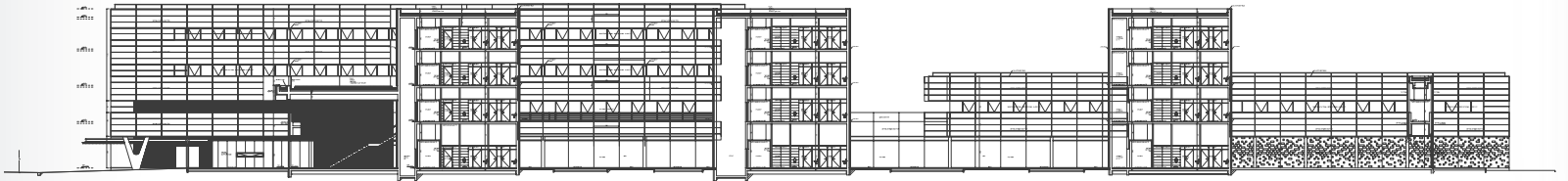
9 th month

**FINAL**

---



# DESIGNING



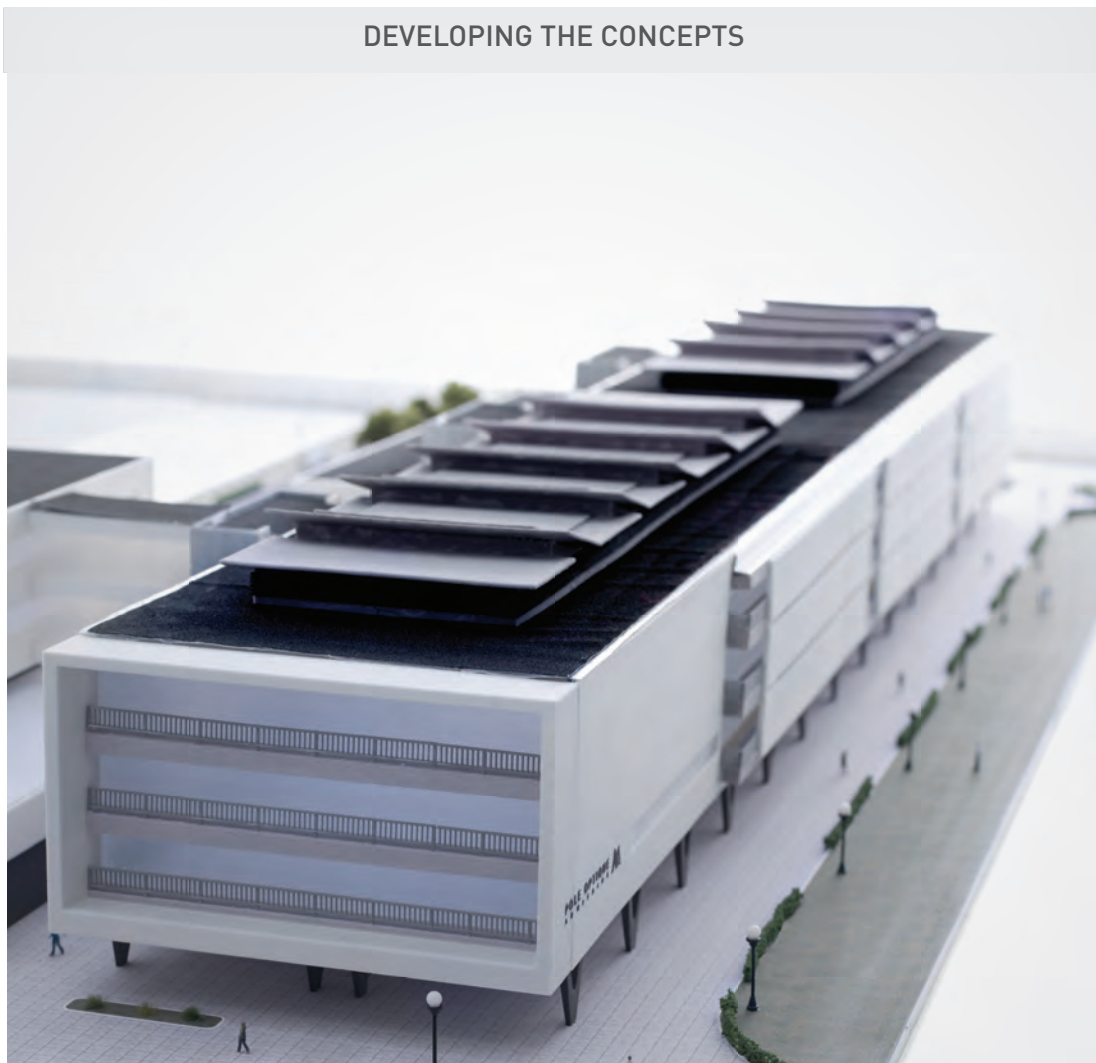
INITIAL PROJECT ARCHITECT



# Initiation

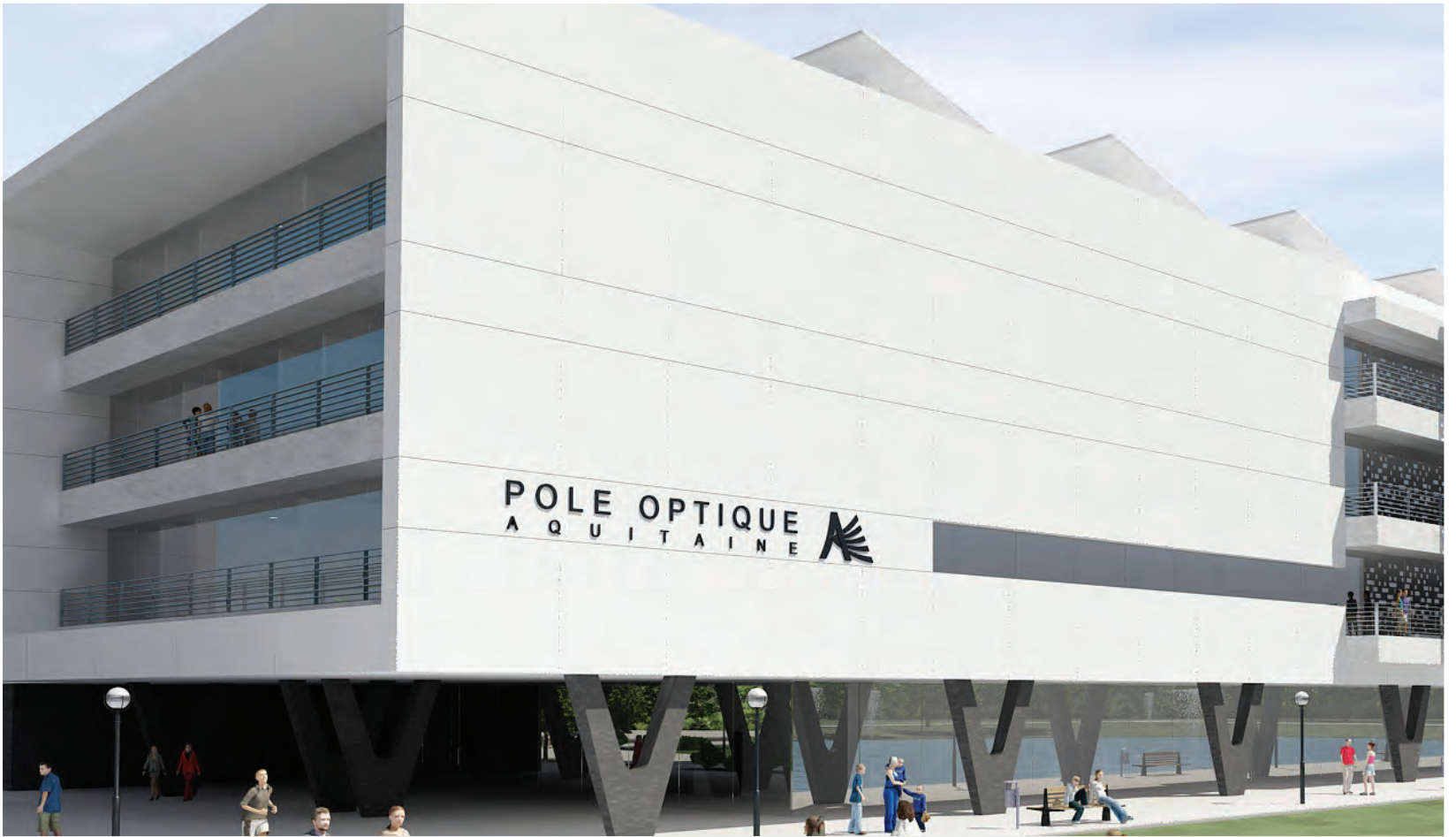


DEVELOPING THE CONCEPTS

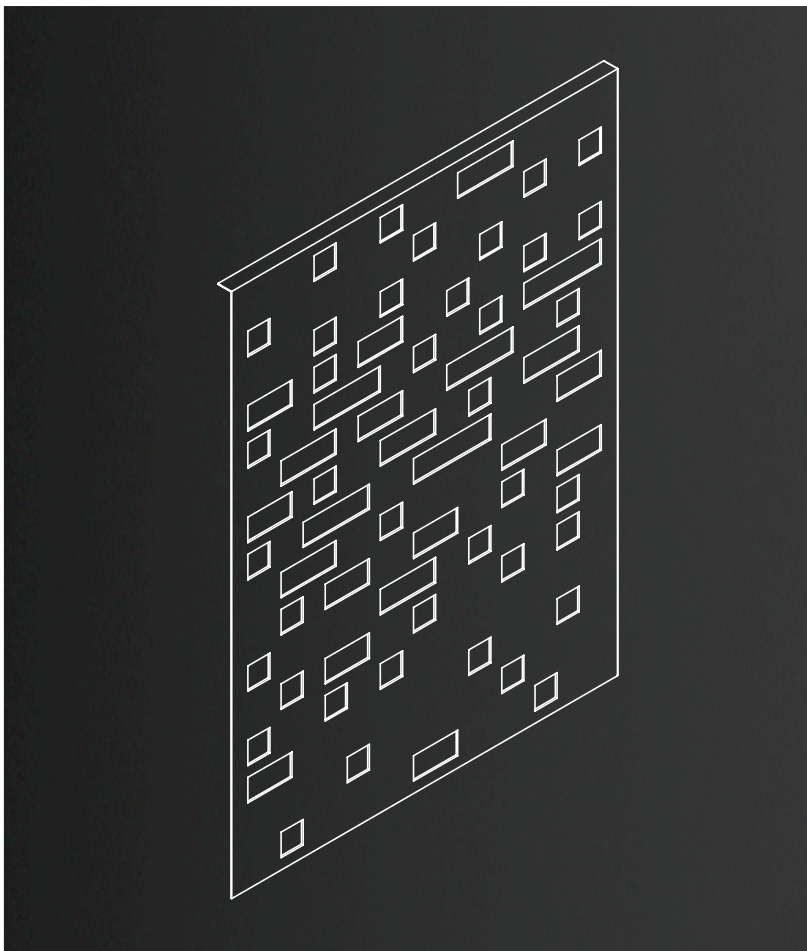


MODELS





DEVELOPING THE DETAILS. RENDERING



PANELS DESIGN



TECHNICAL SOLUTIONS





# TECHNICAL STUDY

1 s t m o n t h





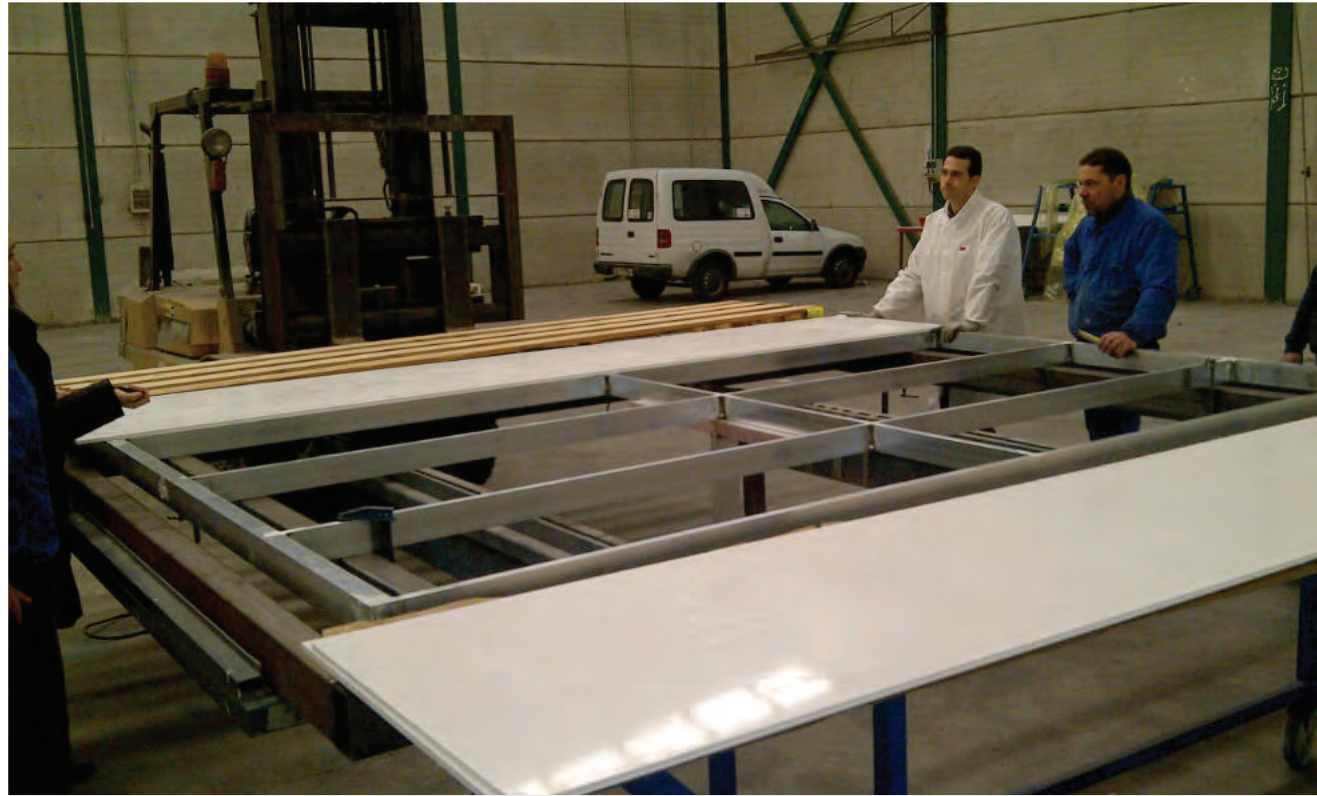
# MOCK UP & TEST



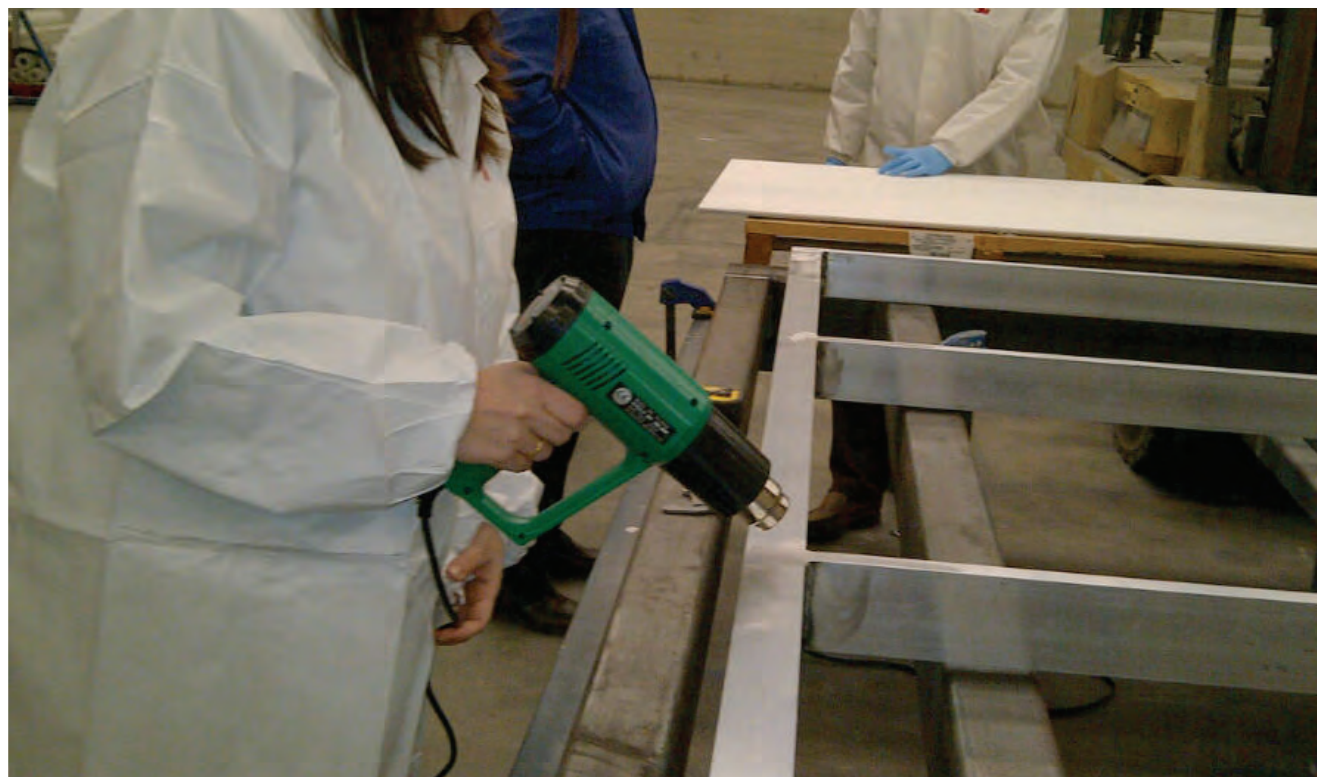
APPROVED TESTING WIND SUCTION



# 3 r d m o n t h

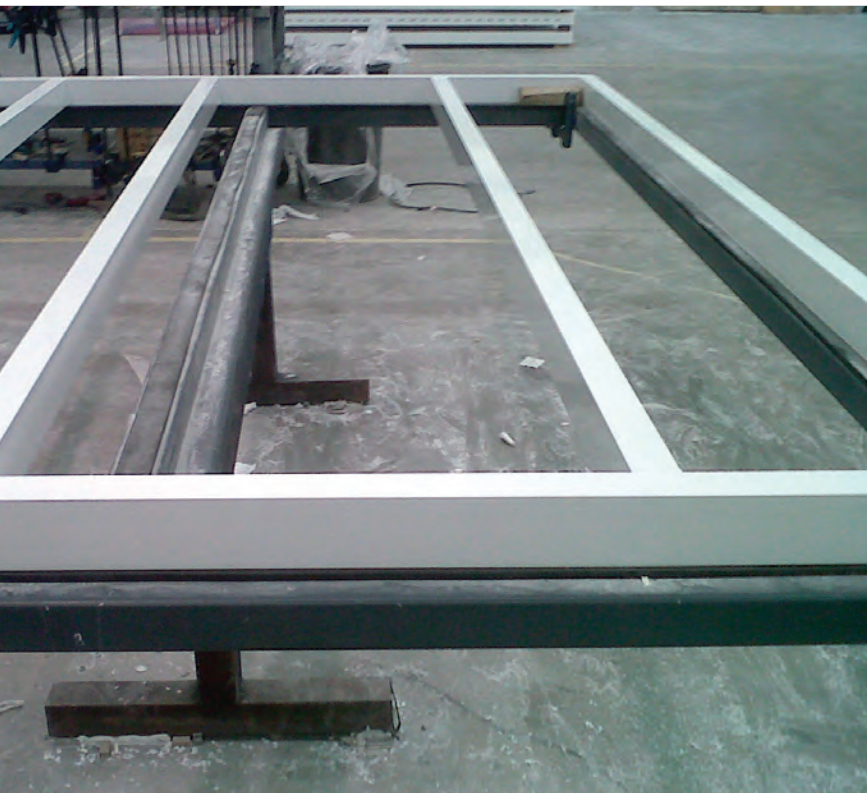


PRODUCTION TEST



MOCK UP ASSEMBLY





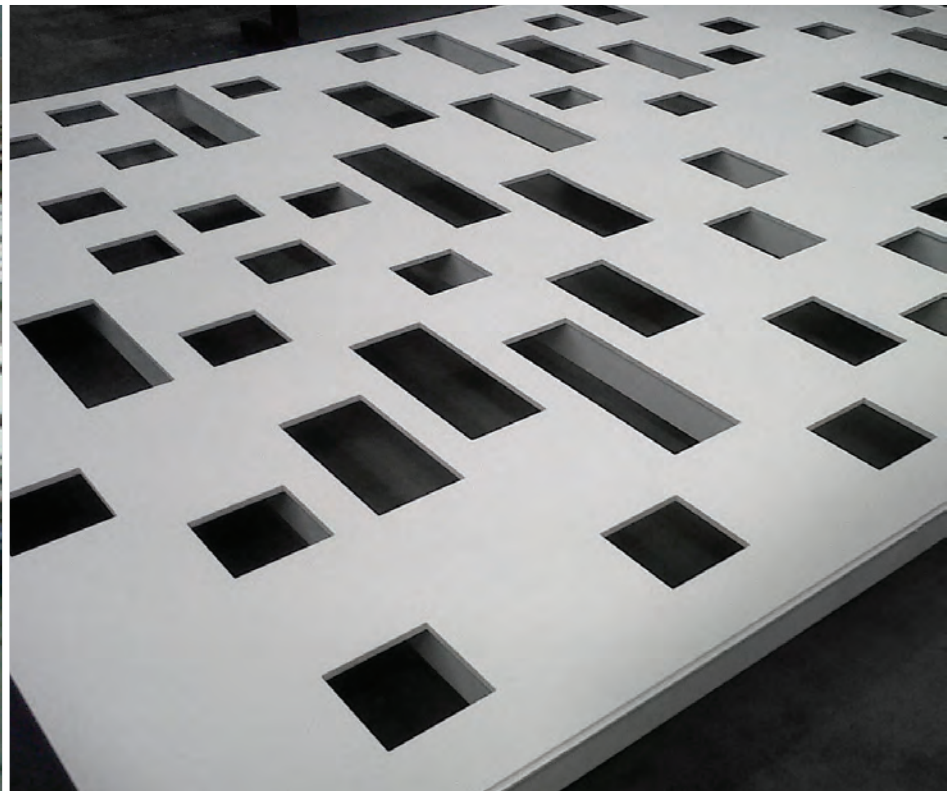
PANEL COATED STRUCTURES



INSTALLATION OF MECHANIZED KRION® SHEETS



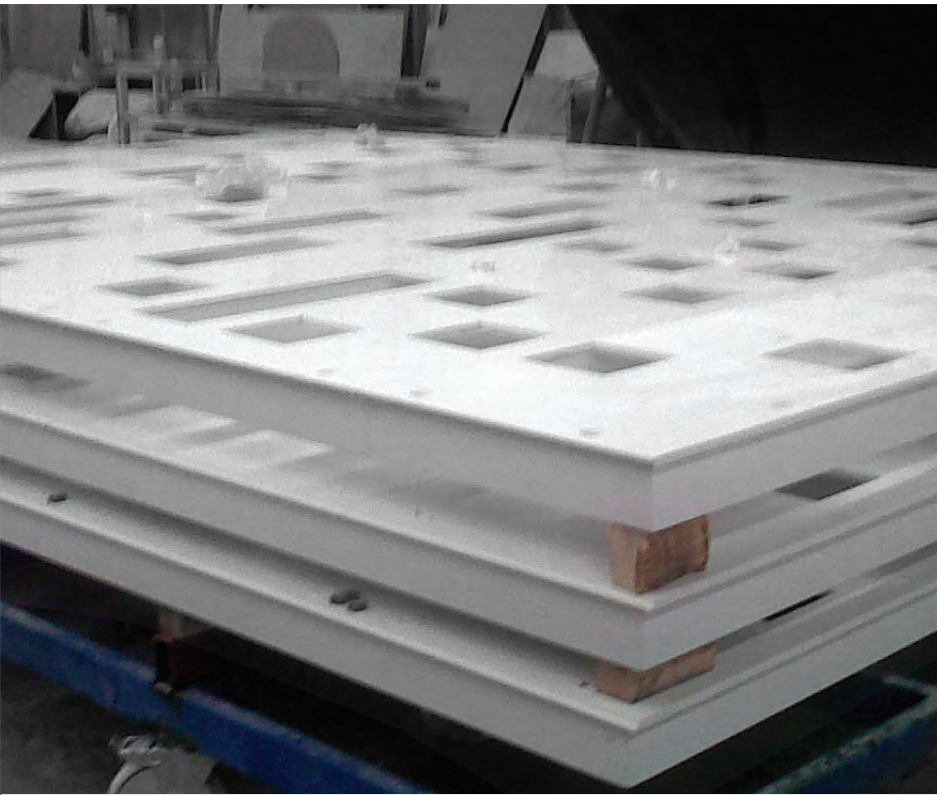
SANDING AND FINISHING OF PANELS



PANEL COMPLETED

# PRODUCTION





PACKAGING OF KRION® ITEMS



PACKAGING SYSTEMS OF KRION® ITEMS



PACKAGING OF KRION® ITEMS



LOGISTIC OF KRION® ITEMS

4 t h m o n t h



# INSTALLATION



MOVEMENT OF PANELS IN SITE



KRION® PANELS INSTALLATION



INSTALLED PROFILES



UNION PANELS



KRION® PANELS INSTALLATION



# 6 t h m o n t h

---



FAST PANEL ASSEMBLY





VERTICAL SLATS

*FINAL*

9 t h m o n t h







GANGWAY. BUILDING SIDE LATTICE







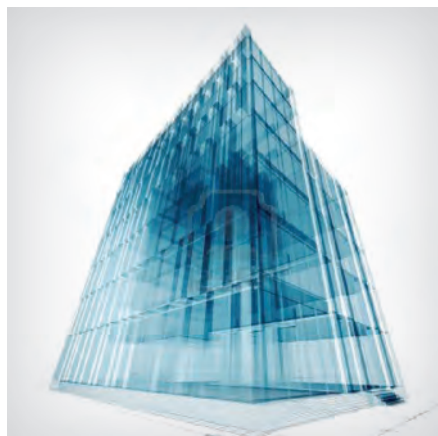
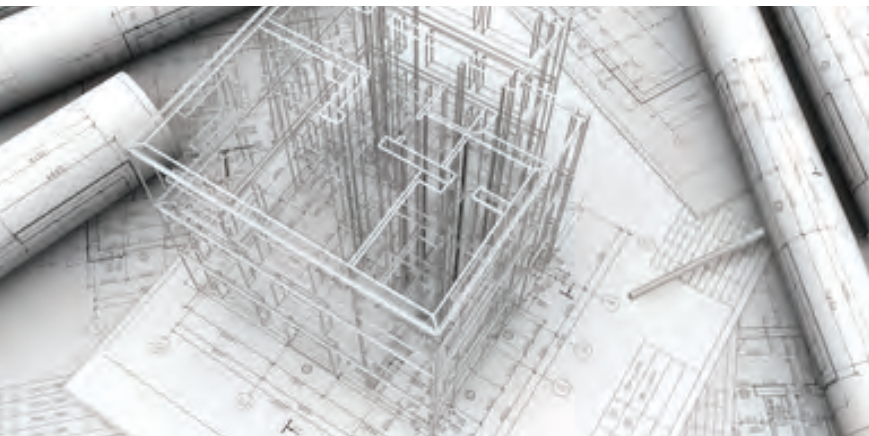


# 3

---

ENGINEERING  
CONSULTANT





## **BUILDING DESIGN**

---

**Leadership.**

Butech is a European leader in the design and construction of ventilated facades.

**Innovation.**

We are specialists in solid surface facades.

**Design.**

We work with the most important architecture firms.

## **FACADE ENGINEERING**

---

**Human resources.**

We accept all challenges.

**Constructive solutions.**

We develop solutions that work.

**Certification and testing.**

Endorsed by major international certification bodies: CSTB (France), BBA (UK) or Instituto Eduardo Torroja (Spain).

## **PROJECT MANAGEMENT**

---

**Responsibility.**

Our customers' confidence is our main asset.

**Experience.**

We are backed by projects throughout the world.

**Warranty.**

PORCELANOSA Group, global company present in all markets.



# 20 YEARS OF EXPERIENCE DEALING WITH ALL KINDS OF ENGINEERING PROJECTS



## 1 Business and technical advice.

---

Great projects are born from great ideas.

The experience of our technicians at the service of our customers. We overcome difficulties and adapt façade systems to any project.



## 2 Preliminary technical dossier.

---

Data, tables, graphs, images, drawings, and technical details.

Information is power. We have the know-how for carrying out all kinds of facades with ceramic and krion, the new generation solid surface.



## 3 Modulation of façades

---

We support architectural firms in the design of the building envelope.

The best facade at the lowest cost, that's our job. We analyze the project characteristics and the chosen finish, and find the best solution for each facade.



## 4 Artwork / Computer graphics

---

A picture is worth a thousand words.

We help turn our customers' projects into art.





## 5 Technical calculations of facades

---

Our facade systems work.

Facade design and construction entails great responsibility. Our engineers check the project technical requirements, carry out all the calculations, and propose solutions.

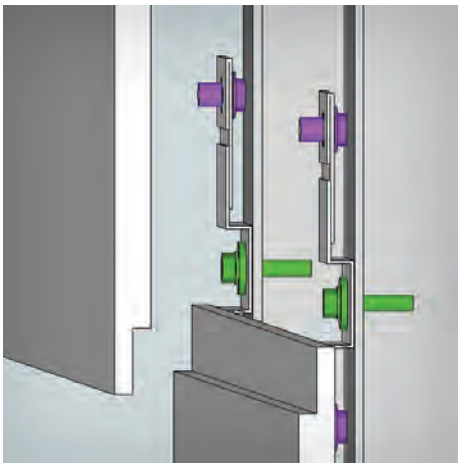


## 6 Technical project of facades

---

The key to success is in the detail.

Our projects include the position of each facade component, from the first krypton slab up to the last screw. All project elements are taken into account in our plans.

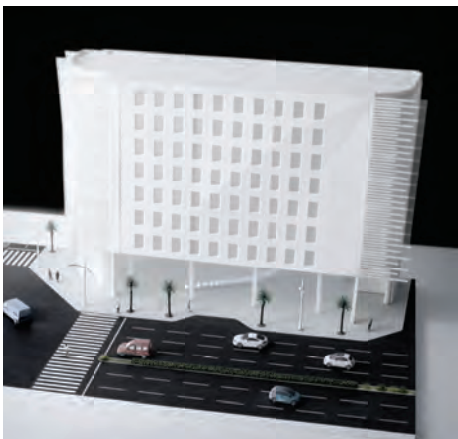


## 7 Development of construction details

---

Technical support to the consultant.

We collaborate with our clients in the development of technical details for their projects. We have construction solutions for all types of façades.



## 8 Model design and construction

---

Before building our solutions, we check that they work.

Before developing a project, we make 1:1 scale models to go over all the details. We never leave anything to chance during construction.





## 9 External certifications / testing

Commitment to quality.

The quality of our projects is supported with real data. We test and certify materials, structures, anchors, and technical solutions, in the most demanding laboratories.



## 10 Project management: planning and logistics

We have a desire to serve.

We manage all the variables to obtain the best results. We plan and coordinate from the production of materials to the project installation and certification.



## 11 Technical assistance during construction

Qualified technicians and experience in KRION® facades.

We select the best construction technicians and train them in facade technology. We have the best tools and know to use them.



## 12 Installation of facades

True specialists in ventilated facades.

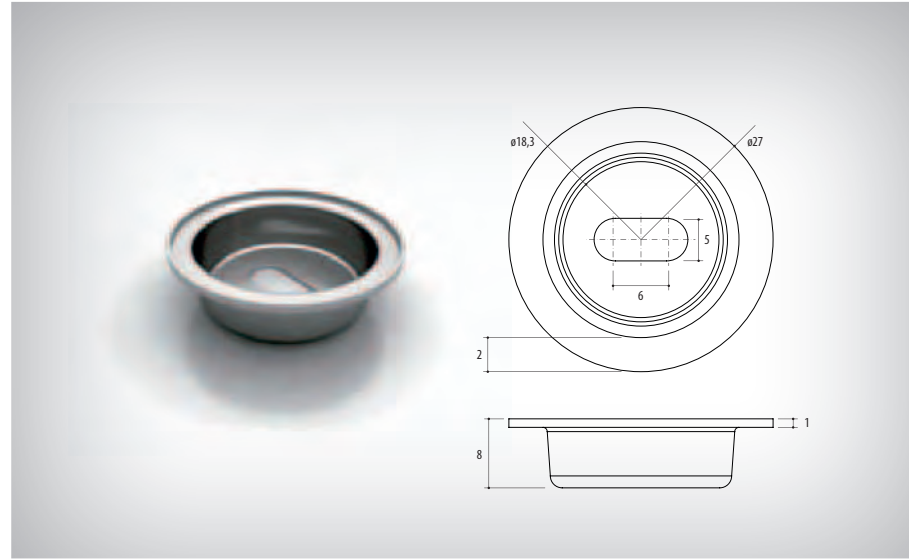
Our installation teams only install ceramic and solid surface facades. We know our job and carry it out throughout the world.



1. ONE-WAY SUBSTRUCTURE



2. SHELL



3. INSTALLING KRION<sup>®</sup> PANEL WITH FRONTAL SCREW



4. INSTALLING KRION<sup>®</sup> CAP WITH ADHESIVE

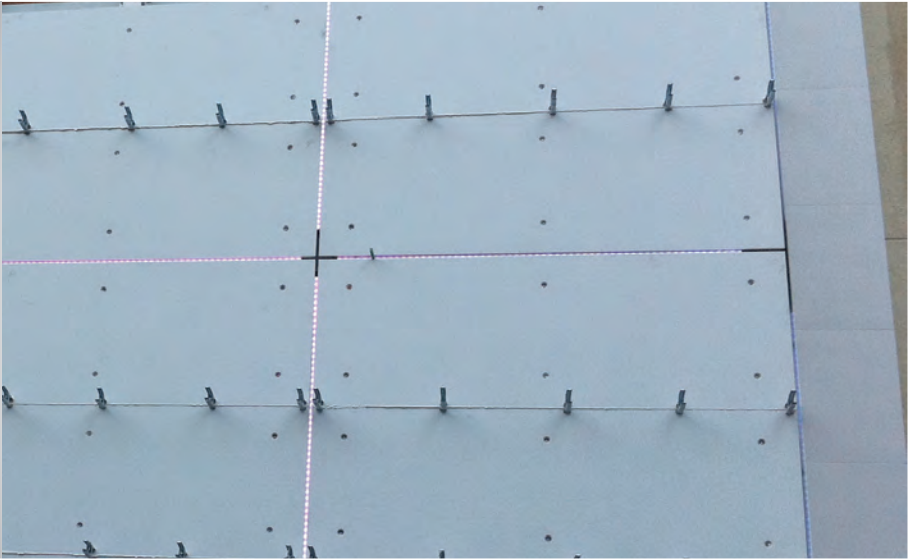


5. PIECE SANDING





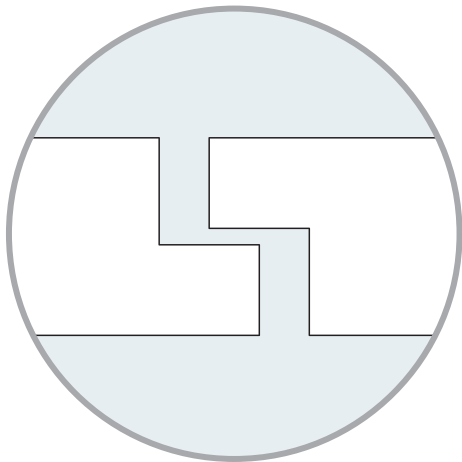
## 6. CONTINUOUS PANEL WITH INVISIBLE JOINTS



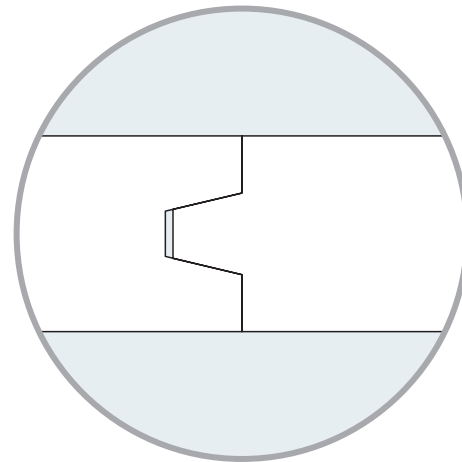
EXPANSION RECESSING



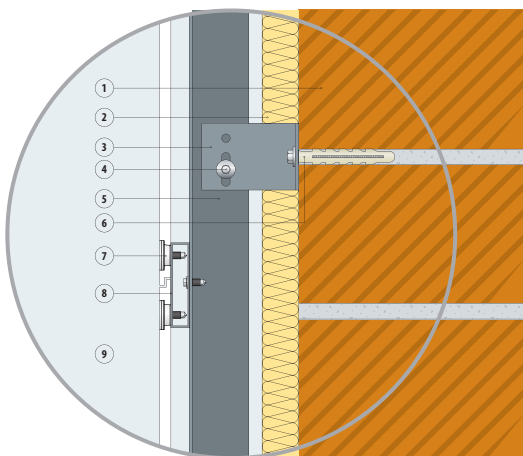
TONGUE AND GROOVE FOR SLAB JOINING



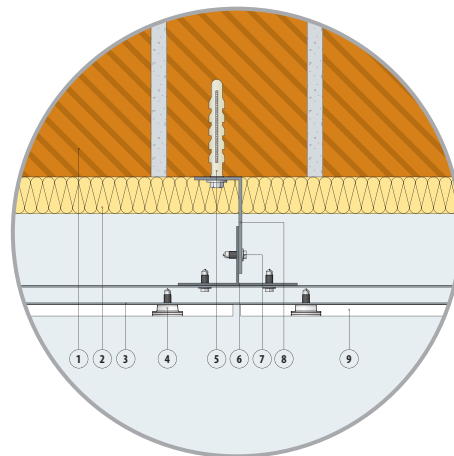
VERTICAL CROSS-SECTION



HORIZONTAL CROSS-SECTION



1. Enclosure
2. Thermal / acoustic insulation
3. "L" shaped separator
4. Union "L"/"T" screw separator
5. "T" Section
6. Union anchoring "L" shaped separator / enclosure
7. KRION® Cap
8. Tube section
9. KRION®



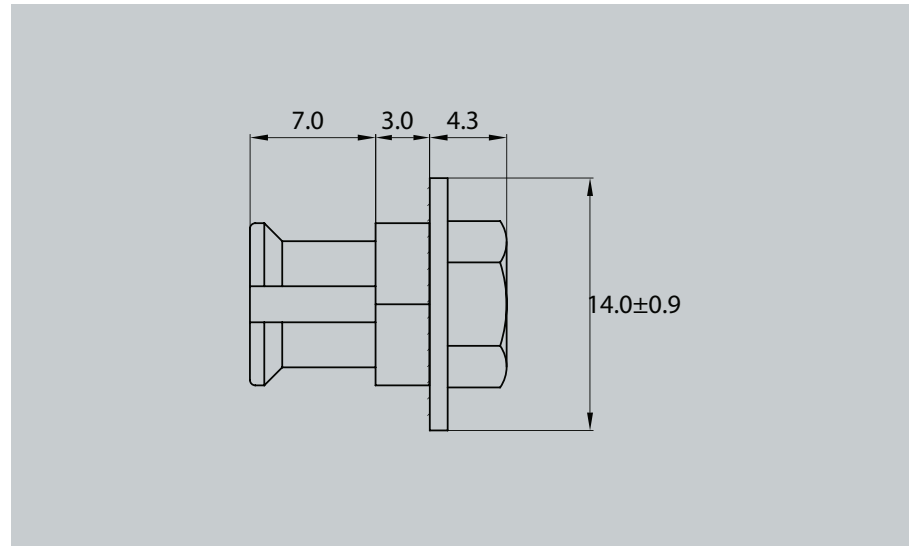
1. Enclosure
2. Thermal / acoustic
3. Tube section
4. KRION® Cap
5. Anclaje unión separador.
6. "T" Section
7. Union anchoring
8. Union "L"/"
9. KRION®



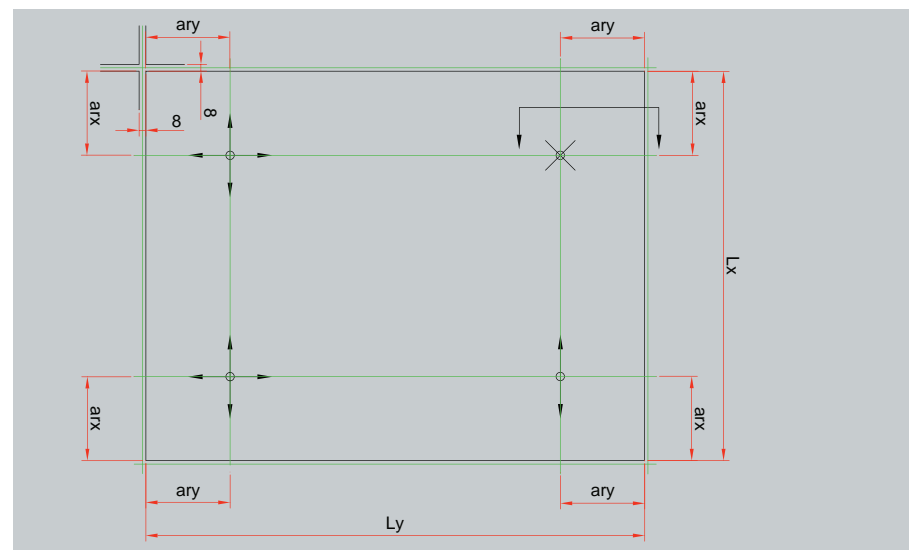
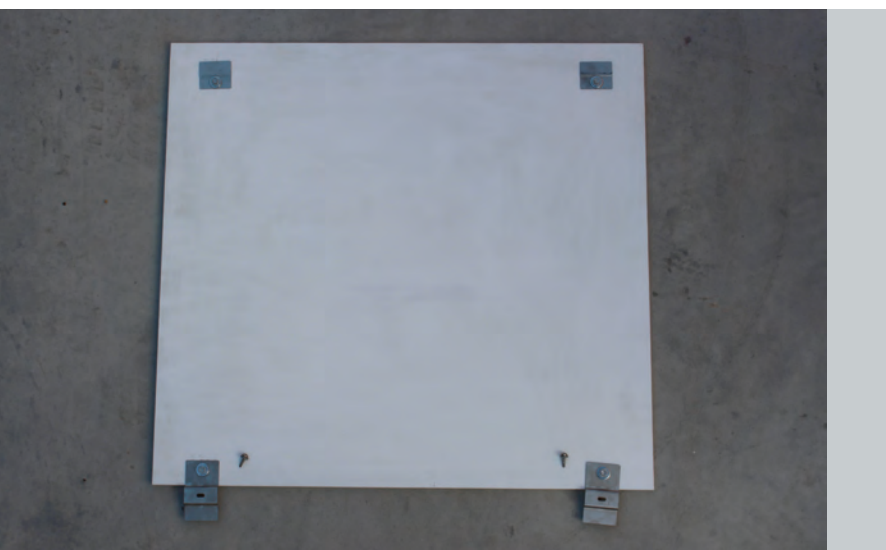
1. KRION ANCHORING SYSTEM



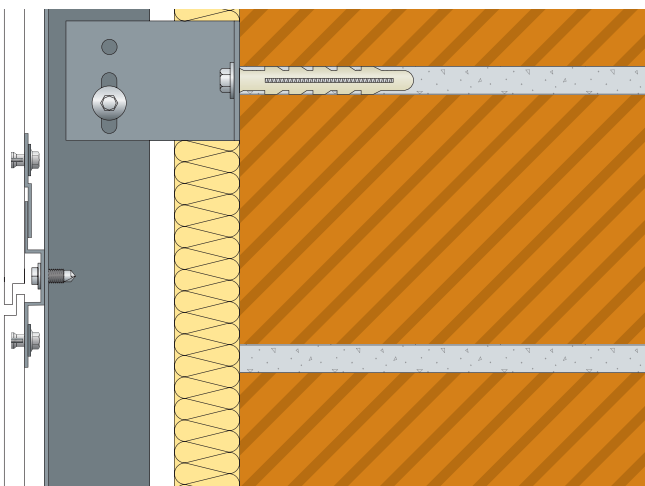
2. ANCHOR



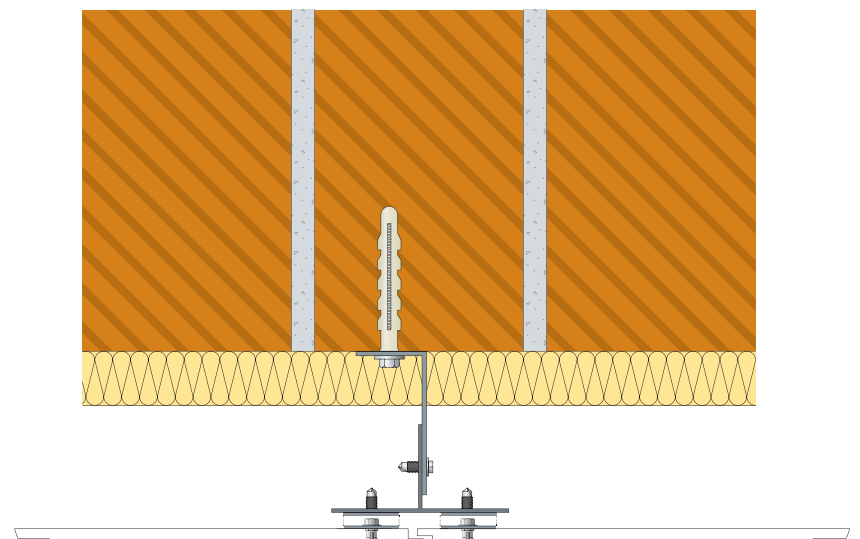
3. ARRANGEMENT OF ANCHORS ON THE BACK OF KRION<sup>®</sup> SLAB

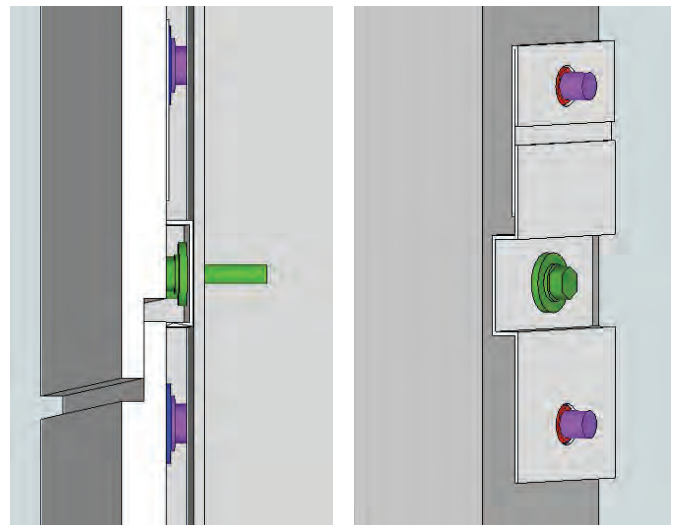
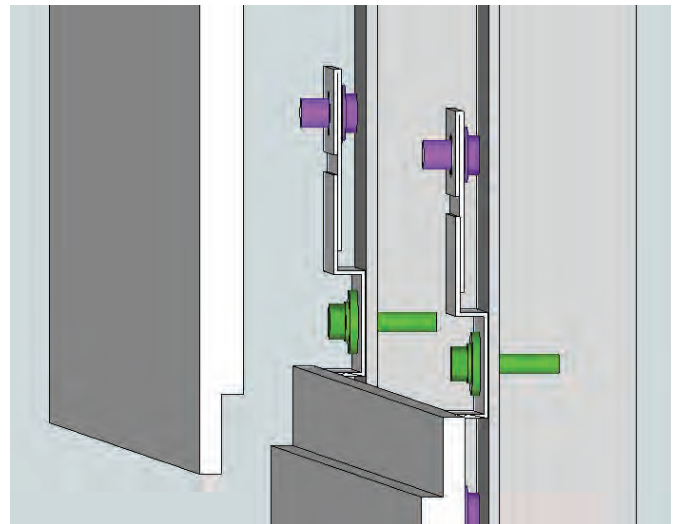
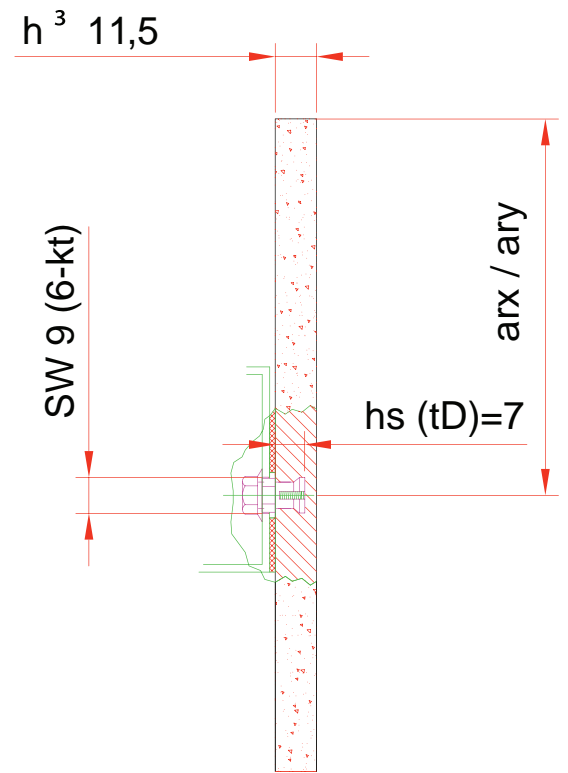


4. VERTICAL CROSS-SECTION



5. HORIZONTAL CROSS-SECTION



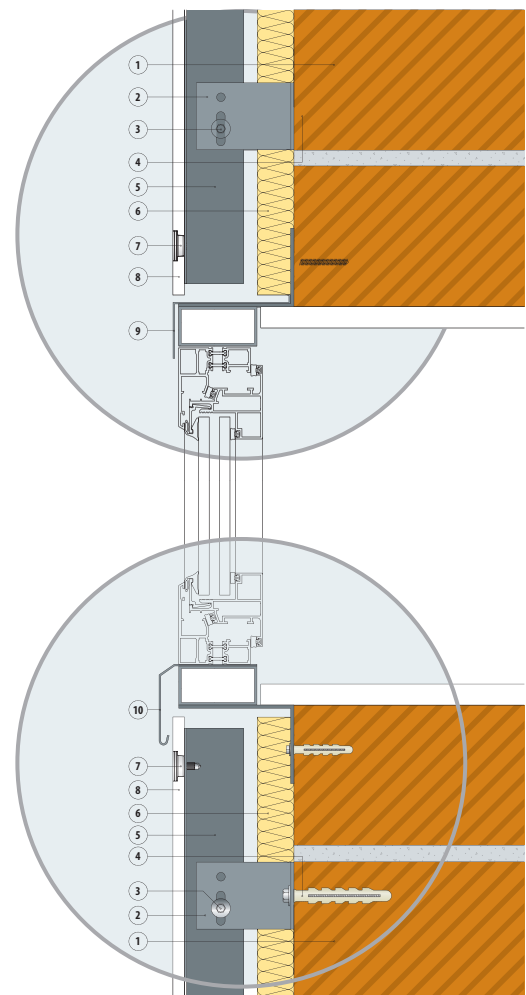






## WINDOW SECTION WITH OUTER SHAFTS

1. Enclosure
2. "L" shaped separator
3. Union "L"/"T" screw
4. Union anchoring "L" shaped separator / enclosure
5. T" Section
6. Thermal / acoustic insulation
7. KRION<sup>®</sup> Cap
8. KRION<sup>®</sup>
9. Folded stainless steel sheet
10. Flashing caps





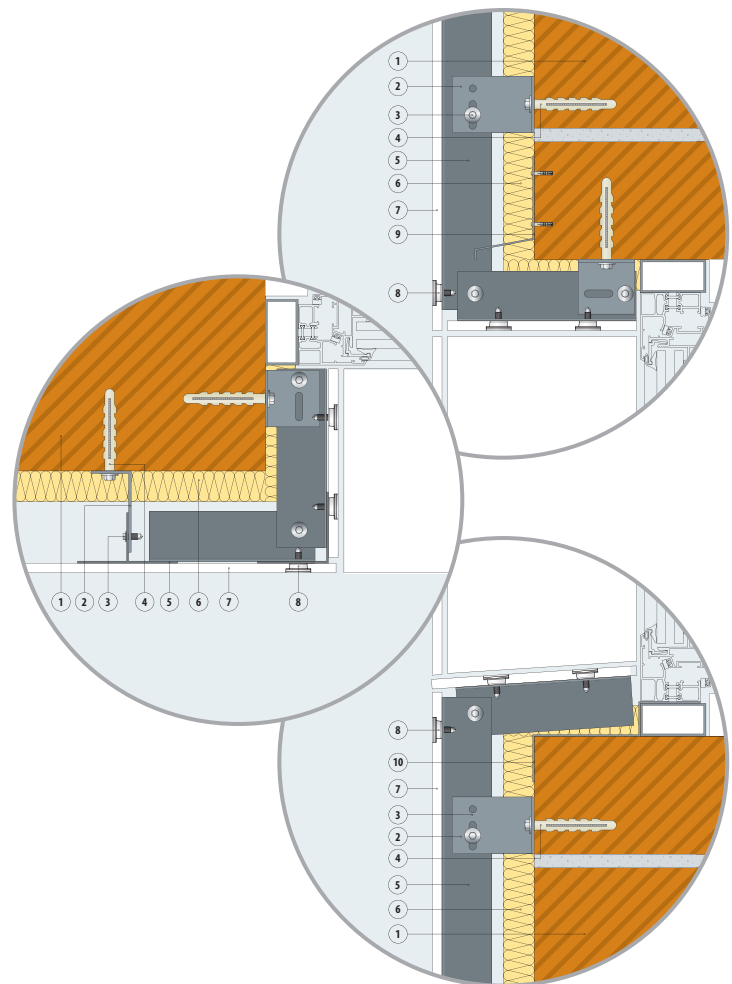


**CSTB**  
le futur en construction



## DRESSINGS WITH KRION® VERTICAL AND HORIZONTAL CROSS-SECTION

1. Enclosure
2. "L" shaped separator
3. Union "L"/"T" screw
4. Union anchorage "L" shaped separator / enclosure
5. "T" Section
6. Thermal / acoustic insulation
7. KRION®
8. KRION® Cap
9. Flashing caps
10. Folded stainless steel sheet







# 4

## P R O J E C T S

---

Our technicians have developed the necessary tools, and techniques for implementing KRION® both decoration and building facades. All PORCELANOSA experience in the installation of ventilated ceramic facades applied to KRION®, thus achieving the most innovative. The experience of PORCELANOSA Group's ventilated mounting teams, together with the ability of our technicians, make KRION®'s ventilated facade a new reality which contemporary architecture.



P R O J E C T S

---

## ARCHITECTURAL FIRM CASTELVECIANA

---



### BERSHKA MADRID

---

The white and elegant façade was a genuine and unusual concept from the beginning. Located in downtown Madrid, which is known for respecting its heritage, this was precisely the challenge... building a project that breaks with tradition and, at the same time, is in harmony with environment.

### BERSHKA ISTANBUL

---

An emblematic building that tries to achieve a formal coherence with the environment and, at the same time, stands out in that area with a contemporary project, achieves perfect harmony with the city's most active street.





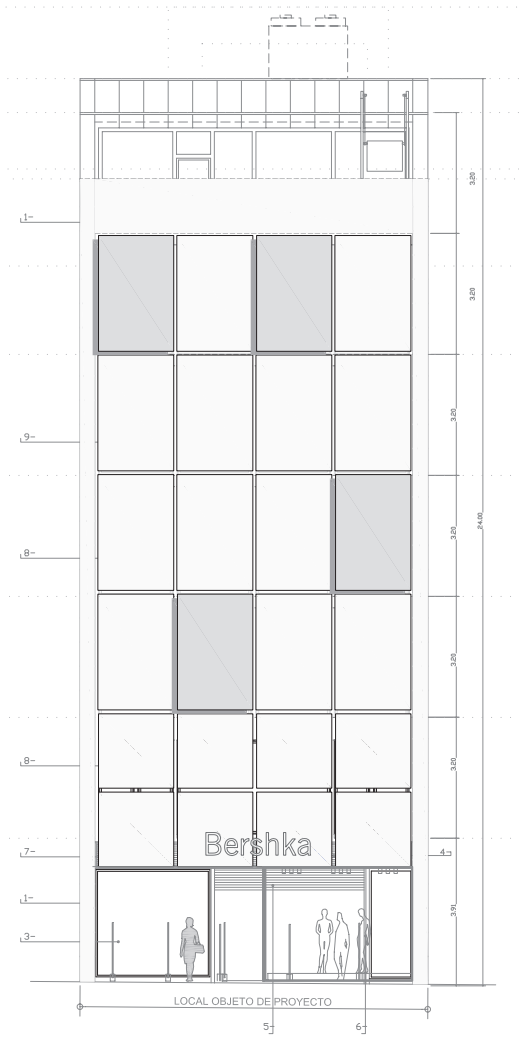
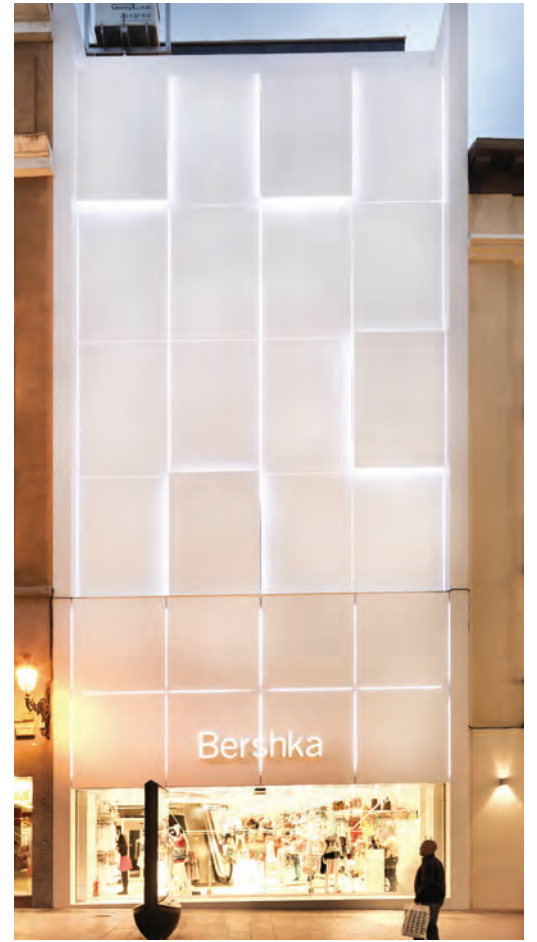
## BERSHKA FACADE MADRID (Spain)



Composition made up of panels placed at different vertical planes, with integral joint back-lighting and enhanced panels.

Material: KRION® Stone 5101  
No. modules: 24  
Module dimension: 3,150 x 2,050 mm.  
Front facade area: 758 m2





The renovation of this downtown store, located at one of the points with greatest pedestrian Spain, has been a unique opportunity for presenting KRION® as a facade material, unprecedented and unique solutions characterized by its white intensity and the harmony giving rise to scenes that are as unconventional as they are spectacular; KRION® is the views thanks to the intense light refraction effect on its white body, turning again into a dusk and during the night with the focus this time on the play of the back-lighting and its the facade panels.



The refurbishment works of this store, located in a very busy area, demanded a quick execution, as well as a high-precision installation which can be observed in the perfection of the panel alignment; this space can be clearly seen when these lines are back-lit at sunset.

The details, the specific solutions, the finishings, the dressings, all the facade singular points are previously studied and resolved to achieve a finish with no surprises, and at the highest level.





## BERSHKA FACADE

### Istanbul (Turkey)



Ventilated Facade on one single vertical plane with joint back-lighting with integrated refractors.  
The back of the building is combined with ceramic.

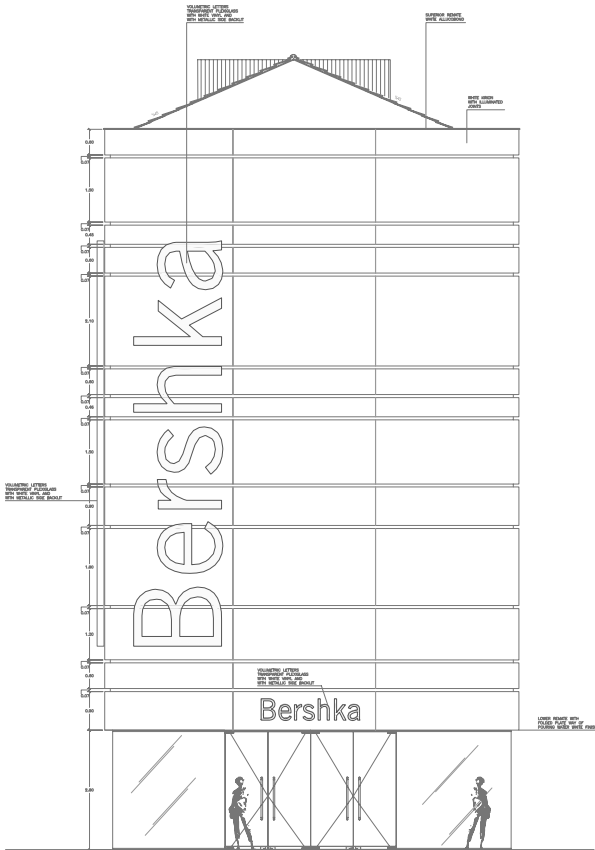
Material: KRION® Stone 5101

No. modules: 74

Module dimensions: varied, adapted to the project.

Total façade area: 1600 m<sup>2</sup>



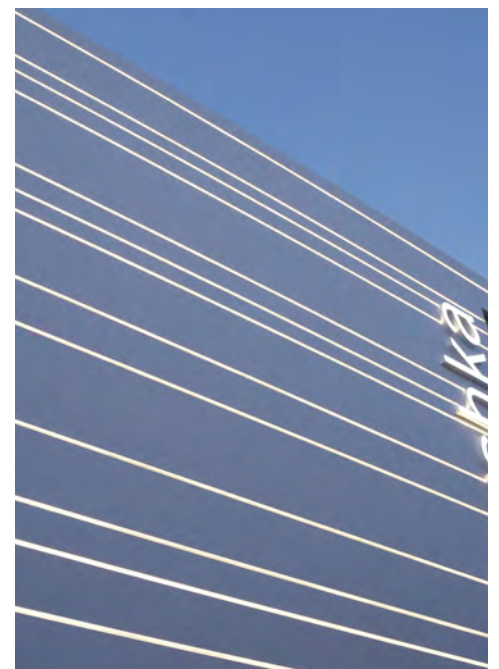


The building is presented as a solid and sturdy body, showing at certain times of the day an interesting game of shadows between the two perpendicular facades, which further enhance KRION®'s bright white color. At night the building adopts a stunning identity, offering a state of the art image characterized by the bright lines which are perfectly integrated into the envelope design.



The use of the ventilated facade system provides energy benefits, acts as an insulator by its chimney effect, with a result that is by no means negligible in a warm environment that requires cooling frequently.

The monolithic appearance of the façade compels Architecture professionals to wonder where the expansion joints are. These elements, essential in any construction, are present but nearly invisible. KRION® offers the possibility of integrating the expansion joints in such a way that they are practically unnoticeable, or at least that they are not a focal point for the viewer.





P R O J E C T S

---

## ARCHITECTURAL FIRM

---

Hembert Penaranda



### HEMBERT PENARANDA

---

#### TOUR RAFFINITY

---

The diamond, its sparkle, purity, and perfection, have been the inspiration for this building intended for the jewelry sector and that presides over Casablanca's shopping area.

The inclined planes, the brightness of the surface, and its perfect construction, have been the solutions that KRION® has offered to this important challenge.





## TOUR RAFFINITY Casablanca (Morocco)



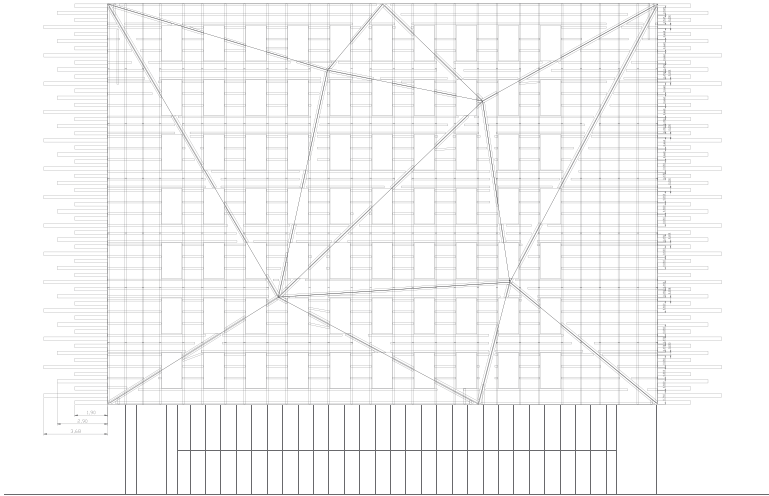
Ventilated Facade with triangular modulation positioned on different inclined planes; window dressings; fin shape side finishings hanging on a curtain wall.  
The building side walls are carried out with KRION® bonded façade.

Material: KRION® Lux – snow White 1100

No: modules: 320

Module dimensions: varied, adapted to the project.

KRION® area on façade: 1675 m<sup>2</sup>



As if it were a jewel, this diamond-inspired singular project has required great care and precision in order to achieve integral harmony, with no imperfections or time delays. KRION® projects have the technical support of the Porcelanosa Group companies in charge of carrying out the studies, the planning, as well as the checks prior to starting the project, so that its development can be carried out without incidents and the according to the level of expectations. The execution time for this façade was only 3 months.

The Project is characterized by a complex geometry, based on inclined planes with common vertices, which require the highest precision when installing the sections, and thus having to use the most advanced topographic techniques for ensuring a correct appearance. In a parallel way, the KRION® panel composition is such that there are no two equal parts, so we can say that the roof is a real puzzle; these types of cases are not a problem for KRION® because of its adaptability.



Located in one of Casablanca's main arteries, from the tangent view of the building that passers-by and people moving down the avenue have, a surprising game of lights and shadows can be seen following the plane inclinations.





P R O J E C T S

---

---

## WILSON ASSOCIATES FERNANDO ARTEAGA



---

### WILSON ASSOCIATES

---

#### SOFITEL AND PALL MALL HAIKOU

Visible from any point of the city of Haikou, these two Towers rise representing an exercise of innovation and high quality, marking a milestone between the before and yesterday of a beautiful island with a high and expanding tourist potential.





## SOFITEL AND PALL MALL

### Haikou / China



Ventilated facade built with injection-made modules.

Material: KRION® Stone

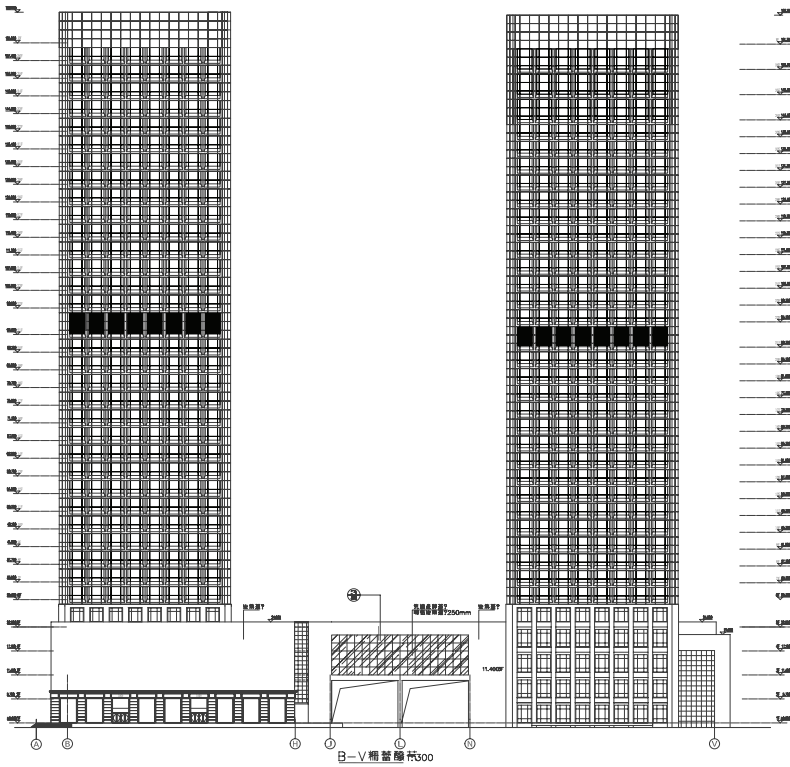
No. modules: 24,800

Module dimensions: different geometric shapes. 52 molds.

KRION® area on façade: 47,000 m<sup>2</sup>

Height of Towers: 168 m





After having exceeded all the necessary technical requirements for its application, KRION® opens a new scenario in the construction of high-rise buildings.

“It was my dream, it did not exist, but you have managed to make it real now”.

This sentence spoken by the Project Investor possibly summarizes the enthusiasm, rigor, and energy, with which our Technical teams work along with the Architects signing the Project, to bring KRION® to heights that few could have predicted for a mineral composite material.

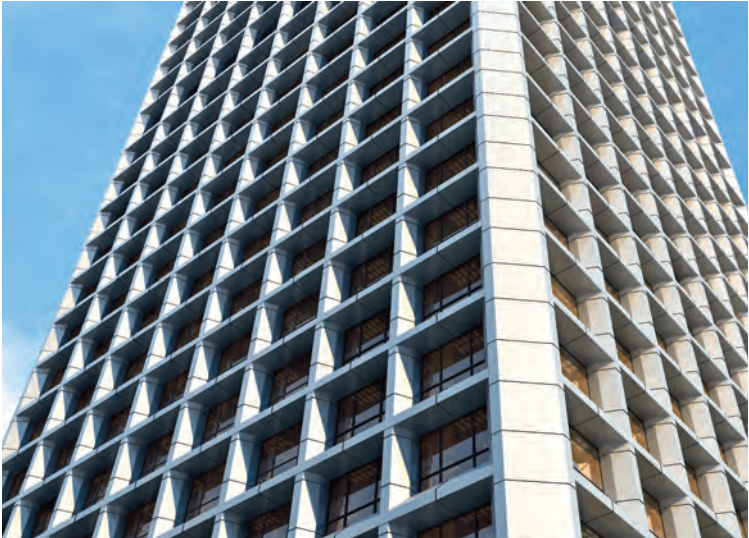
The two Towers of this emblematic project become a symbol for the city of Haikou, represent the commitment to quality, to a job well done, and ultimately are synonyms of progress.

Those who visit these facilities can see how the magic of the façade is also transmitted to the interior. The hotel guests will be able to see when they enter their rooms, how the material used on the outside is also covering their interior walls and furniture.



CARRYING OUT THE MOCK UP CLEARS DOUBTS AND IS USEFUL FOR IMPLEMENTING ALL KINDS OF CHECKS AND TESTS.

Manufacturing KRION® parts made from three-dimensional molds, which offer a high geometric precision, is a really fascinating resource which comes to revolutionize the design of facade claddings.





P R O J E C T S

---

## ARCHITECTURAL FIRM

Nicolas Ragueneu / Jean Marie Mazier



### INSTITUT D'OPTIQUE D'AQUITAINE

This prestigious French Institute leader in the optics field, needed a material that was apart from conventional finishes and was able to take advantage of light and iridescence, transmitting a technical and beauty message that would be easily recognizable by visitors.





## INSTITUT D'OPTIQUE D'AQUITAINE (Pôle Optique), France.



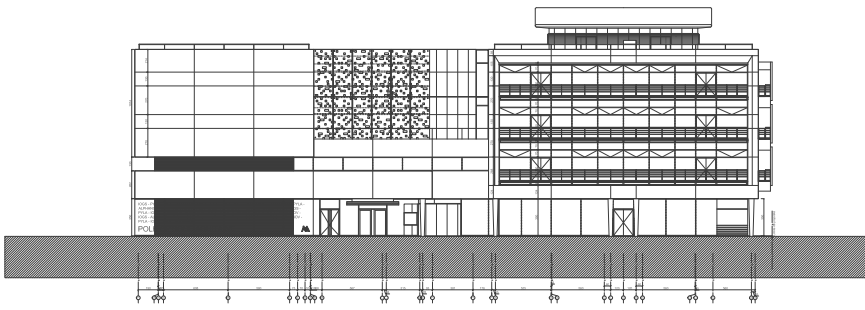
Ventilated Facade on one single vertical plane  
Lattice made of KRION® modular Panels with Aluminum substructure.

Material: KRION® Lux Snow White 1100

Ventilated facade area: 7,657 m<sup>2</sup>  
Module dimension: 2,800 x 2,700 mm

Lattice façade area: 1,150 m<sup>2</sup>  
Module dimension: 3,800 x 2,800 mm





The KRION® flat ventilated facades, combined with the KRION® lattices, give rise to a composition that is truly visual and full of interesting hues. Light and purity are transmitted, and the volumes generated are as large as they are lightweight.

The KRION® lattice has been carried out using an aluminum substructure, so that the full panel has been installed as a single piece.

KRION® is so easy to machine that it allows the Designer to develop their own design, with hardly any restrictions.



KRION® is an essentially mineral material, and is mainly composed of Alumina, from which it inherits its intense stone appearance.

The intrinsic properties of KRION® regarding its low electrostatic capacity, high hydrophobicity, and high chemical resistance, make it a low-maintenance and clean material for using on facades.

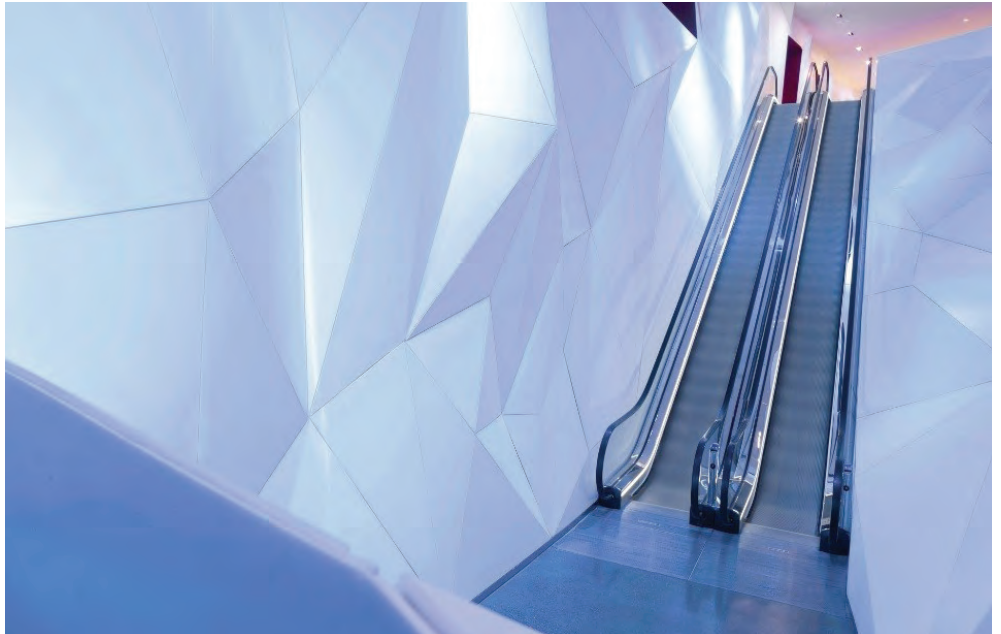


P R O J E C T S

---

## ARCHITECTURAL FIRM GRAVEN IMAGES

---



### RADISSON BLU MALL OF AMERICA

Looking for an original and groundbreaking design, the Scottish architectural firm Graven Images (Glasgow), has developed a true work of art in the project for the hotel Radisson Blu Mall of America in Bloomington, Minnesota (United States), organizing a striking interior design with Krion® pieces.





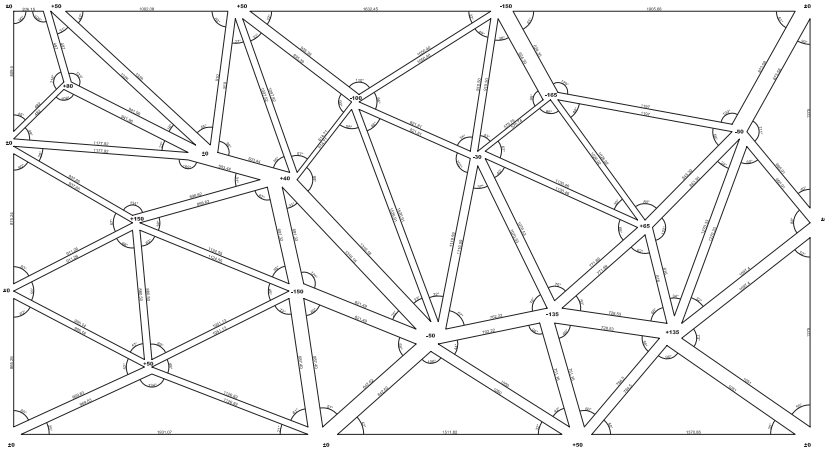
## RADISSON BLU MALL OF AMERICA

### Bloomington, MN, United States



- Architect / Designer: Graven Images
- Built by: MG McGrath, Inc.
- Installed by: MG McGrath, Inc
- KRION color used: Snow White and Red fire
- M2 of KRION used: 2,600 m2





This is a unique project, as the hotel has direct access to the large shopping and entertainment Mall of America. In keeping with the grandeur of the complex, the hotel features a unique décor, achieved thanks to the use of PORCELANOSA Group's new generation solid surface in several of its rooms.

In the hall, KRION® Snow White has been used for cladding the walls and the stairs located at both ends, combining with touches of deep red from KRION® Red fire pieces. As it happens in the lounge which gives access to the bar and the hotel restaurant, the reception walls are covered with KRION® Snow White slabs with geometric shapes joined together, showing a design reminiscent of ice blocks, with touches of KRION® Red fire.

Large glass panels make it possible to take advantage of natural light, with light invading the room during the day. In addition, the sparkle of the color spotlights located on the ceiling create a relaxing chromatic atmosphere that gives the visitor a sense of tranquility.

Both in the escalator, located to the right of the entrance, as in the regular stairs, to the left, the same decorative line has been maintained, in line with the rest of the design.

This futuristic design has been captured as well in the lounge that gives access to the Cocktail bar and the fire Lake Grill house restaurant, which has been covered with triangular KRION® Snow White panels, forming a geometrical structure of great visual power. The projection of the room lighting on the KRION® panels creates a warm and at the same time very modern light effect.

Without a doubt, this is a project that perfectly captures the versatility of this advanced material developed by Systempool, enabling designs as unique as this one, without forgetting its properties such as its low maintenance and the zero porosity of its surface, which makes it easy to clean.





P R O J E C T S

---



## SOYOMBO TOWER

---

In an extreme environment, this project is part of the great architectural project of Mongolia's capital, which has as an objective to completely transform the view of the city in this decade.





## SOYOMBO TOWER

### Ulaanbaatar (Mongolia)



Architecture Firm: Local Mongolian (unknown)

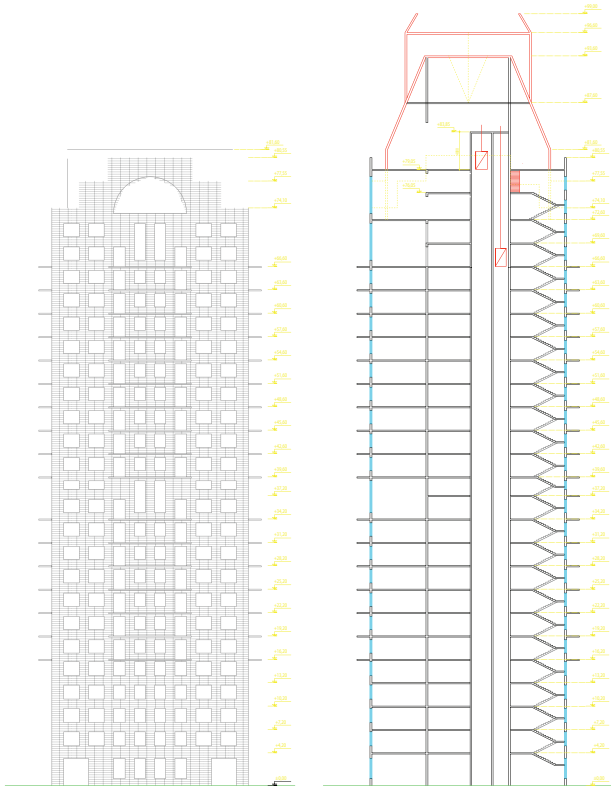
Material (Type of KRION): Krion Lux 1100

No. modules: 460 modules

Module dimensions: 12 m2

Front façade area m2: 9,722 m2





THIS STUNNING BUILDING FOR RESIDENTIAL AND OFFICE USE, WILL BEGIN ITS CONSTRUCTION IN THE NEXT FEW MONTHS AND WILL BE LOCATED IN THE HEART OF THE CAPITAL, NEXT TO THE PARLIAMENT OF MONGOLIA AND THE EMBASSIES IN THE COUNTRY.

The structure's linear, clean-shaped and straight line design, along with the whiteness of the building's outer skin, allow it to integrate perfectly with the landscape, giving continuity to the genuine purity of the environment.

This is a KRION® ventilated facade with a total surface area of 7,000 square meters and 120 meters in height, which will make it a landmark and the tallest building in the country.





P R O J E C T S

---



SOCIAL HOUSING IN CANTABRIA

A unique style for a residential building destined to become an icon in this reference city in the Cantabrian Coast.

Stand out that includes curved volumes combined with lighting, which gives it a special and genuine aesthetic.





## SOCIAL HOUSING IN CANTABRIA. SANTANDER

### Santander (Spain)



Architectural Firm: PASESTUDIO19

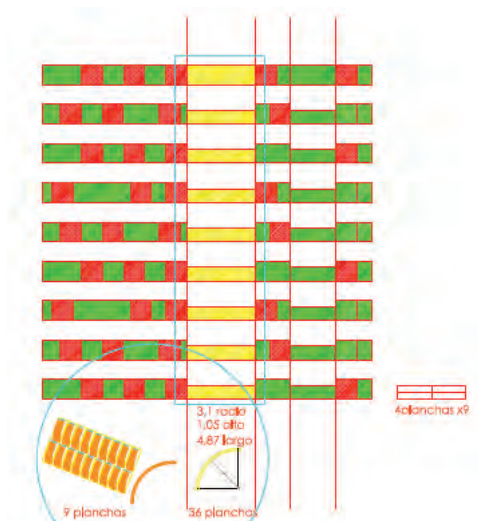
Material (Type of KRION): Krion Lux 1100

No. modules: 115 modules

Module dimension: 2.6 m<sup>2</sup> up to 7 m<sup>2</sup> (variable).

Front façade area m<sup>2</sup>: 1650m<sup>2</sup>





THE SHAPE OF THIS HOUSING BUILDING IS UNIQUE. THIS BUILDING WILL NOT HAVE MARKED JOINTS OR STRAIGHT FRONTS.

It will be a fluent structure, which emerges from the Earth and rises gently to emulate the sails of ancient boats. A touch of Gaudí can be visible in the smooth architectural walls, giving a feeling of backdrop, surrounded by waves and nature.





P R O J E C T S

---

## ARCHITECTURAL FIRM

---

Touza Architecture



### KRION FACADE , 3M IBERIA

---

The research, innovation, and ability to surprise prestigious firm has been the context for carrying clearly avant-garde facade which uses an innovative bonding system based on the use of adhesive materials from the 3M firm.





## 3M PROJECT Madrid (Spain)



Material: KRION LUX 1100

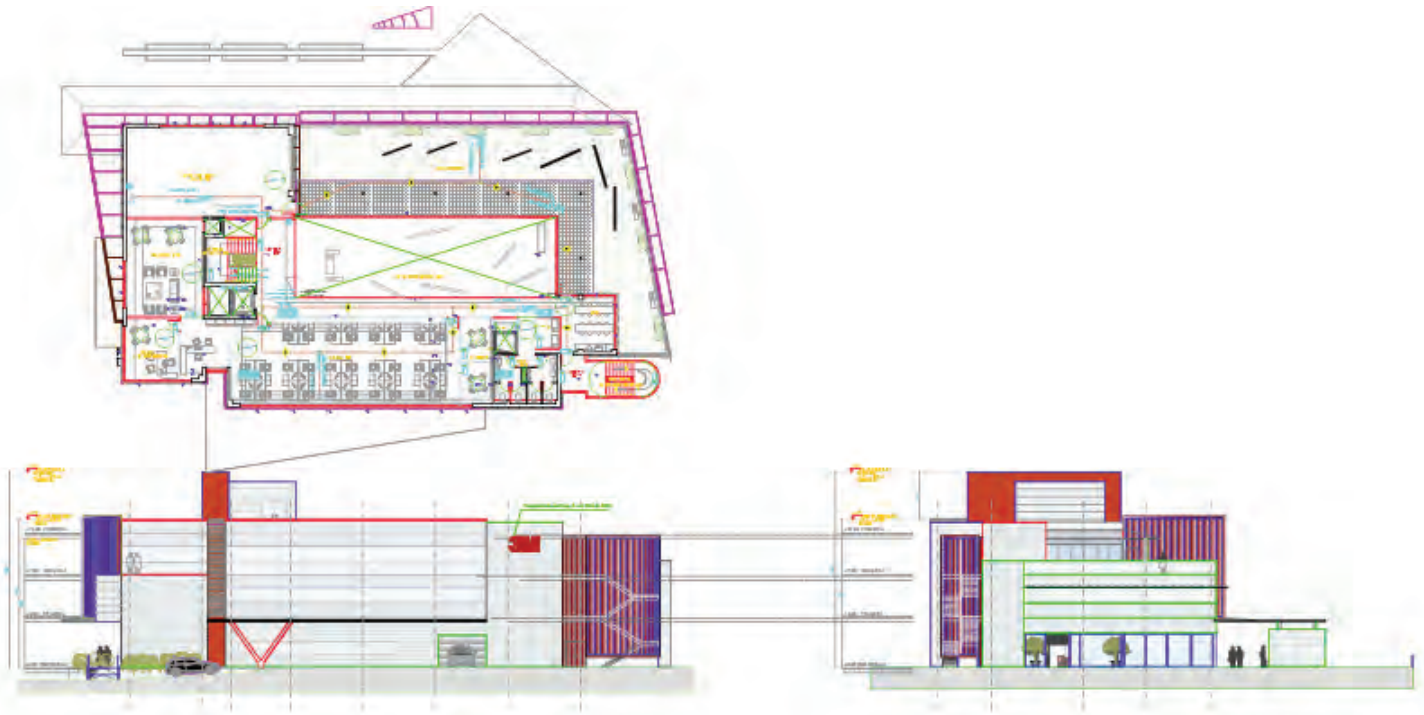
No. modules: 62 MODULES APPROXIMATELY

Module dimensions: DIFFERENT

MEASUREMENTS

Front façade area m<sup>2</sup>: TOTAL FACADE 1100 m<sup>2</sup>







P R O J E C T S

---

## ARCHITECTURAL FIRM

Nicolas Moulin / Cabinet ADPI

---



### FRENCH EMBASSY IN BANGKOK

---

An uncomplicated and refined volume, which contrasts with the complex and highly articulated houses of surroundings.





## FRENCH EMBASSY IN BANGKOK

### Bangkok, Thailand

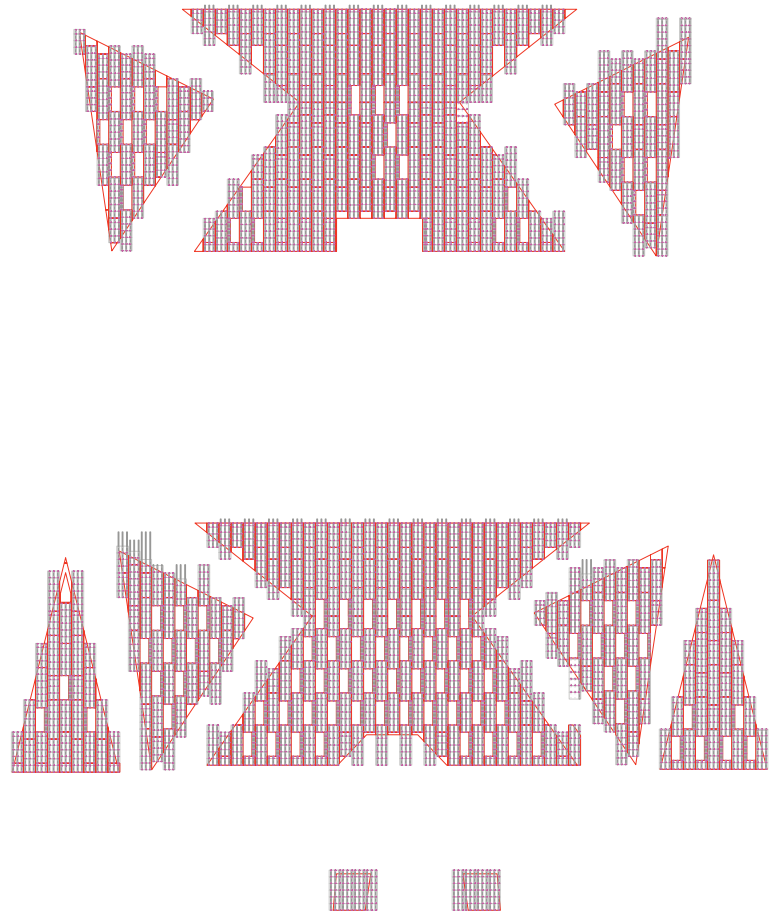


Material: KRION LUX 1100

No: modules: xxx MODULES APPROXIMATELY

Module dimensions: DIFFERENT MEASURES

Façade area m2: 2600 m<sup>2</sup> FRONT FAÇADE



This is a project with an original design where the façade and roof break into different surfaces, surpassing the classic construction model in which lines are cut at right angles, in order to configure a 3D façade. It is a groundbreaking concept that, along with the white color from Krión Lux, will make this building a new reference in the Thai capital's architecture.



N A T U R E I N S P I R A T I O N

K

w w w . k r i o n . c o m







N A T U R E I N S P I R A T I O N

PORCELANOSA Group  
w w w . k r i o n . c o m